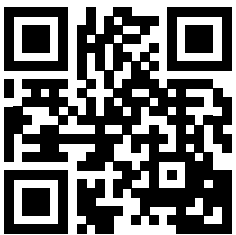




GENERAL CATALOGUE
2025-2026



To complement the information presented in this catalogue with additional content, digital resources and updated details, we invite you to scan this QR code and thus access directly to our official website.

We are BRONPI

Where the warmth of home is born

At BRONPI we do not only manufacture heating systems: **we create heat that transforms homes into shelters, stays in meeting places and fires into shared well-being.**

Since our inception, we have worked with passion to make each of our products not only efficient, durable and environmentally friendly, but also part of the soul of every home. Because we understand that the heat is not only a need: **it is an emotion, a memory, a feeling of home.**

Our commitment is born from the daily work of **a team dedicated, close and passionate**, who puts heart in every design, every test and every detail. They are people who understand that behind every team, there is a family waiting for warmth, security and confidence.

With a deep family root and an innovative vision, in **BRONPI** we balance both tradition and cutting-edge technology. We design and manufacture in Lucena (Cordoba) Spain, taking care of every detail, to offer stoves, fireplaces, ovens and boilers designed to accompany your life.

Our mission goes beyond heating spaces: **we want to create environments that invite you to stay, share, live more slowly and with more sense.**

BRONPI is much more than heating. It's heat with purpose.
Home, sustainability and trust.



BRONPI - The heat that unites





40 Years Of passion for home warmth

In this 2025, **BRONPI** proudly celebrates **four decades of history**, innovation and commitment to our customers. A path that began in 1985, with the entrepreneurial dream of bringing heat from biomass to homes, with products designed and manufactured in Lucena (Córdoba) Spain.

From those first steps until today we have grown, modernized, expanded our range of products and conquered international markets. But there is something that remains intact: **our essence, our closeness and our way of understanding heat as something that goes beyond a comfortable temperature.** For us, warmth is companionship, it is shared life, it is home.

Today, with a presence in every continent of the world and an extensive product catalogue, we celebrate this anniversary with gratitude and enthusiasm, looking to the future with the same passion that drove us from the beginning.

Thank you for being part of our story.
Thank you for sharing with us these 40 years of warmth, confidence and home.

1985  **2025**

During these 40 years we have been committed to:

- ✓ **Constant innovation,** with cutting-edge technologies that make the difference in efficiency and sustainability.
- ✓ **National manufacturing,** taking care of every detail and maintaining the difference in efficiency and sustainability.
- ✓ **Our customers and dealers,** who trust us and inspire us to improve day in and day out.

BRONPI – *40 years lighting emotions.*

Why choose BRONPI?

Because a BRONPI product not only warms your home, it accompanies you in moments, creates atmospheres and takes care of yours.

Choosing a BRONPI product is much more than choosing a stove, fireplace or heating system. It is to opt for **quality, experience and trust**; it is to bet on a brand that has been lighting homes and accompanying families for 40 years.

Since 1985, at BRONPI we have worked with a clear goal to achieve: **to create warmth that inspires well-being, brings together and excites**. Each product we design and manufacture, carries behind a careful process, where innovation and quality are present.

10 REASONS TO TRUST BRONPI

1 40 years of experience in the sector.

2 National manufacture. With total quality control from design to final assembly.

3 Sustainable technology, with technological systems that reduce emissions and improve equipment performance.

7 Versatility in models, with a wide range of products.

8 Close and professional technical advice and after-sales service.

4 Projects designed for real homes, functional, elegant and customizable.

5 Own R&D and innovation department, which is committed to constant innovation.

6 International presence, with distribution in all continents of the world.

9 A human team committed to each customer and each product.

10 Thousands of satisfied households, who choose us again every winter.





Our technology



OASYS TECHNOLOGY

OASYS Technology and OASYS PLUS: Intelligence at the service of combustion

The **OASYS (Optimum Air System)** and **OASYS PLUS** technologies are exclusive systems developed by the R&D department of Bronpi Calefacción, integrated in all BioBronpi models.

This innovative system precisely studies and controls the main factors affecting pellet combustion, thus ensuring optimum performance and efficient combustion.

The **OASYS Technology** takes into account multiple factors, such as pellet characteristics, installation characteristics and environment conditions.

For its part, the **OASYS PLUS Technology** takes this analysis one step further, making even more accurate measurements and working with greater efficiency to adapt in real time to any changes in the environment or system.

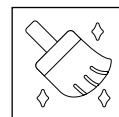
Thanks to this technology, the equipment **automatically adjusts itself**, continuously optimizing both the combustion and the overall performance of the stove.

With **OASYS and OASYS PLUS**, your BioBronpi stove is always calibrated and adapted to the real conditions of use, offering **maximum performance, efficiency and comfort**.



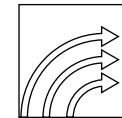
MODULATION AND STANDBY SYSTEM: AUTOMATIC EFFICIENCY

The equipment has a modulation system that automatically adjusts the operating power once the programmed temperature is reached. This allows to maintain the thermal comfort with an optimized consumption of pellet, generating an important energy saving. In addition, it incorporates the StandBy mode, by which the stove automatically turns off when the desired ambient temperature is reached and turns on again when it is necessary to recover this temperature, guaranteeing efficiency and comfort without user intervention.



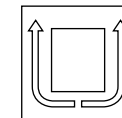
DOUBLE CLEANING SYSTEM

Double Cleaning System: This innovative system developed by Bronpi consists in the 360° rotation of the burner base while it is cleaned deep and automatically by a brush made of stainless steel. Thus, the cleaning of the base is complete since the ashes that have not yet fallen by gravity into the ashtray are swept away by this brush. Thanks to this system, the user will enjoy maximum comfort and autonomy of the stove, without having to manually clean the burner.



TRIPLE COMBUSTION SYSTEM

An innovation that takes performance to the max. Thanks to a third combustion of the unburned gases in the first and second combustion, higher efficiency is obtained and real wood savings. More heat with less consumption.



DOUBLE CAMERA SYSTEM

This system creates an air chamber between the combustion zone and the outer surface of the appliance. The result is a lower surface temperature, avoiding thermal shocks with walls and favoring a more efficient natural convection. More efficient, better for your home.



TOTAL CONNECTIVITY BY MEANS OF WIFI CONNECTION

The WIFI's KIT allows the user to connect to the stove from anywhere via the internet. Thanks to this function, it is possible to turn on or off the stove, adjust parameters, check its status and manage operation remotely, providing maximum comfort and control at all times.



SILENT: DISCONNECTION OF THE TURBINE

This system allows you to enjoy the heat in a quiet way, thanks to its silent operation and the possibility of disconnecting the turbine when desired. Ideal for those who value a quiet environment, without sacrificing thermal comfort. Choose silence, enjoy the heat.



PROGRAMMABLE: COMFORT TO MEASURE

This model allows a complete programming by the user, being able to set automatic on and off times every day. In addition, it offers the possibility of setting different schedules for weekdays and weekends, adapting perfectly to your pace of life and maximizing comfort and energy efficiency.



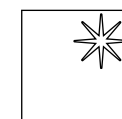
FIRETEK

State-of-the-art, self-cleaning white refractory material, exclusive to Bronpi, which offers a stunning view of the fire.



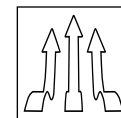
LOAD LEVEL SENSOR

Load level sensor. Thanks to this system, the model will warn when the fuel level in the tank is close to being depleted.



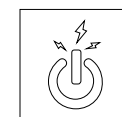
CLEAN GLASS SYSTEM

This system creates an air chamber between the combustion zone and the outer surface of the appliance. The result is a lower surface temperature, avoiding thermal shocks with walls and favoring a more efficient natural convection. More efficient, better for your home.



INDEPENDENT CHANNELLING SYSTEM (ICS)

The Independent Channelling System (ICS) developed by Bronpi allows: Activating / deactivating the channelling system, optimizing the performance of the stove so that only the channelling system is started when necessary. Self-regulating auxiliary fan for channelling. Selection of the speed of the channelled air flow regardless of the power level of the stove.



FAST-ON SYSTEM

Ceramic ignitor: faster ignition.

CONFORT | **TEK**
SYSTEM



The CONFORT-TEK system, developed by Bronpi, facilitates the user operation of the stove with up to 4 preset operating modes.

The stoves equipped with the CONFORT-TEK system are self-regulating, allowing the user to choose the mode of operation in a quick and comfortable way.

⚡ ENERGY

For 20 minutes, the stove will operate at 120% of its maximum power to achieve the desired comfort. Ideal way to get a room heated very quickly.

⏻ SOFT-NIGHT

To achieve a warm and quiet environment the stove will work at minimum power and deactivate the fans, working in natural convection.

Ⓐ AUTO

The user will choose the desired power or temperature, and the stove will intelligently self-regulate to achieve it.

⚠ MANUAL-SMART

The user chooses the desired power or temperature, and can also adjust the speed of the fans to adapt the operation to his need, even stop them at medium or low power.

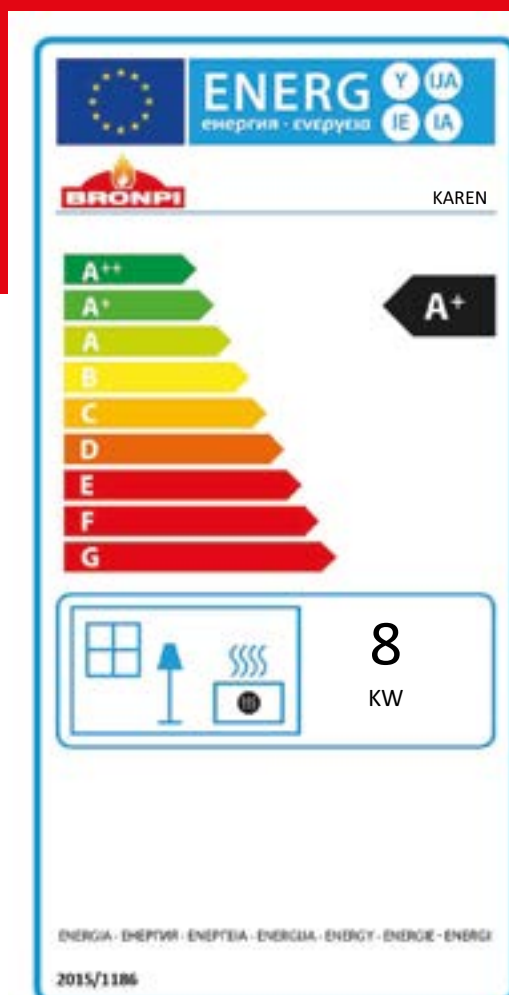
BRONPI: Responsible Heat

Energy efficiency is a paramount value at Bronpi, and all our products are designed to offer maximum performance with the lowest possible consumption. The energy classification, regulated by European regulations, allows us to know the degree of efficiency of each equipment, on a scale that goes from A++ (maximum efficiency) to E (minimum efficiency).

Although there are products on the market that cover this entire scale, at Bronpi we are committed to sustainability and performance, this is why **all our equipment is placed in the most efficient categories: A, A+ and A++**. This guarantees that any Bronpi product you choose will offer you:

- Optimised energy consumption.
- Greater use of heat.
- Lower pollutant emissions.
- A real commitment to the environment.

Choosing a Bronpi product is a commitment to quality, innovation and energy efficiency.



The importance of our Certifications

At Bronpi, every product reflects our commitment to quality, safety and respect for the environment. Therefore, all our equipments comply rigorous European certifications that guarantee compliance with the most demanding regulations in the sector. Choosing Bronpi is choosing certified trust, efficiency and sustainability.

COMMITTED TO EXCELLENCE

CE

Indicates that the product complies with the essential safety, health and environmental protection requirements of the European Union. It is compulsory for trading on the European market.

UNE-EN 16510

European standards unifying technical criteria for solid fuel domestic heating appliances (wood, pellets, etc.), guaranteeing their safety, performance, durability and low emissions.

UNE-EN-14785

European standard for domestic heating appliances, fed with wood pellets.

UNE-EN-12809

European standard for domestic boilers solid fuel independent. Rated thermal power not exceeding 50 kW

UNE-EN 303-5

Applicable efficiency and emissions standards biomass heating boilers (up to 500 kW).

UNE-EN-613 (50 Pa)

European standard for domestic heating appliances that meet the requirements to be watertight.

Ecodesign

European regulation setting strict requirements for energy efficiency and low emissions for heating products. Ensures environmentally friendly operation and optimised consumption.

DIN Plus

German certification that ensures high quality and compliance with strict standards for biomass stoves and boilers, especially in terms of efficiency, safety and emissions.

I.BImSchV

German emission control regulations. It regulates the maximum limits for pollutant emissions (CO, particulates, etc.) from biomass combustion appliances.

Flamme Verte

French eco-label certifying biomass appliances with high performance and low emissions. Increased energy efficiency and reduced environmental impact.

15a B-VG

Austrian regulation setting specific emission and energy efficiency requirements for stoves and fireplaces. It is one of the most stringent environmental standards in Europe.

INDEX

HYBRID
WOOD-PELLET



INSERT-HYBRID
Pag. 22
NEW



HYBRID
Pag. 24

AIR SERIES



TAVIRA
Pag. 28



BRUNO-SLIM
Pag. 30



NEVA
Pag. 32



SERIE FREE
Pag. 34



NICOL
Pag. 38



MINERVA-SLIM
Pag. 40



TINA
Pag. 42



TREBOL
Pag. 44



RITA
Pag. 46



NINA
Pag. 48



KIRA
Pag. 50



CIRA
Pag. 52



LUPE
Pag. 54



ADRY
Pag. 56



CLEO
Pag. 58



DORA
Pag. 60



MILA
Pag. 62



NOA
Pag. 64



NOA-HORNO
Pag. 66



PRINCESA
Pag. 68



ABRIL-EXTRA
Pag. 70



ADEL
Pag. 72



CORAL
Pag. 74



EVA
Pag. 76

AIR SERIES

BRONPI

BRONPI



ALPES HYDRO
Pag. 80



NOA HYDRO
Pag. 82

NEW VERSION



CLARA HYDRO
Pag. 84



CARLOTA
Pag. 86



HYDROBOX
Pag. 88



HYDROTEX-27
Pag. 90



HYDROCONFORT-27
Pag. 90

HYDRO SERIES



Pag. 92

GRATES AND
ACCESSORIES



HYBRID: WOOD AND PELLET

Bronpi's hybrid products combine the best of two systems: the warmth and tradition of wood and the efficiency of pellets. Designed for versatility and performance, our hybrid solutions allow you to adapt to different energy needs and fuel preferences without sacrificing comfort or design.

NEW INSERT-HYBRID

Wood and pellet insert with wifi

A+

Pellet

kW 11 - 4
Max.-min. power

kW 9
Nominal power

225 m³
Heating volume

94-91 %
Performance

2,3-0,9 kg/h
Consumption

150 mm
Ø Smoke outlet

1x400 m³/h
Forced ventilation

848 | 746 | 608
Width Height Depth
Drawing page: 166

Wood

kW 14 - 3,9
Max.-min. power

kW 11
Nominal power

275 m³
Heating volume

84 %
Performance

50 cm
Max. size logs

Main features:

- Wifi included as standard, control by means of APP.
 - Versatile model: choose the interior.
 - Confortek system included: Soft-Night, Auto and Manual-Smart.
 - Possibility of automatic ignition of the firewood.
 - Oasys Plus Technology.
 - Remote control included.
 - Included as standard, charging kit (charging grid + 1 meter tube).
 - Glove included.
- More info page.: 108

Optional elements:

- KIT-VER-IH: Vermiculite interior kit.
- KIT-FIR-IH: Firetek interior kit.
- BIH: Base with height adjustable legs.
- BIH-FIJA: Fixed base ideal for installation at minimum height.
- MARCO4-IH: 4 sides frame of 60 mm.
- KIT-AIR-7: Kit with external air intakes. To convert to airtight in both wood and pellet mode. For its installation is necessary one of the optional bases (ref.: BIH / BIH-FIJA).

AIRTIGHT MODEL (WITH KIT)

The airtight models take air from outside the room where they are installed. They therefore have three ducts, two for the smoke outlet and the other one to collect the oxygen necessary for combustion, both wood and pellet, making them ideal for passive houses, maintaining the hermeticity of the house and its energy efficiency.

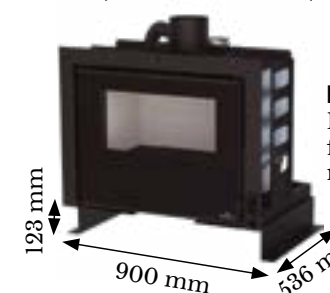
Detail Charging kit included as standard and base with adjustable legs in optional height.



INSERT HYBRID + KIT-VER-IH
(Vermiculite kit)



INSERT HYBRID + KIT-FIR-IH
(Firetek kit)



BIH-FIJA:
Fixed base ideal for installation at minimum height.

HYBRID

Wood and pellet stove

A+

Pellet

kW 11 - 4,8
Max.-min. power

kW 10
Nominal power

250 m³
Heating volume

89-91 %
Performance

2,3-1,1 kg/h
Consumption

150 mm
Ø Smoke outlet

1x380 m³/h
Forced ventilation

561 | 1175 | 566
Width Height Depth
Drawing page: 100

Wood

kW 11 - 4,5
Max.-min. power

kW 10
Nominal power

250 m³
Heating volume

84 %
Performance

40 cm
Max. size logs

Main features:

- Confortek system included: Soft-Night, Auto and Manual-Smart.
 - Possibility of automatic ignition of the firewood.
 - Oasys Plus Technology.
 - Cold hands handle.
 - Glove included.
- More info page.: 108

Optional elements:

- KIT WIFI 2: Control remote of your stove by means of a Wifi's Kit.

Available versions



HYBRID-P VISION
Grey stone with black
screen-printed glass version.



HYBRID-P
Grey stone
version.



HYBRID-NE
Black colour version.



HYBRID-NE-VISION
Black colour with black
screen-printed glass version.





AIR SERIES

Designed to provide immediate and efficient heat, Bronpi's Air Series stoves distribute hot air directly into the room, providing fast and homogeneous climate control. Ideal for spaces that require simple installation without major works, combining technology, design and comfort in each model.

TAVIRA

Slim insert

A+

kW 7 - 4
Max.-min power.

kW 6
Nominal power

150 m³
Heating volume

89 - 93 %
Performance

1,4 - 0,95 kg/h
Consumption

11 kg
Hopper capacity

1x270 m³/h
Forced ventilation

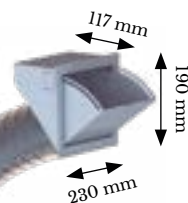
600	555	537
Width	Height	Depth
Drawing page: 108		

- Main features:**
- Includes Oasys Plus Technology.
 - Programmable: daily, weekly and weekend.
 - Ceramic ignitor: faster ignition.
 - Includes pellet load level sensor.
 - Cast iron combustion chamber and burner.
 - Black screen-printed glass.
 - Removable front drawer for loading pellet
 - Includes 3 sides frame as standard.
 - Includes remote control with screen.
 - Includes glove.
 - More info page: 101

- Optional elements:**
- KIT-MARCO4-TAVIRA: Lower profile of the frame to convert to 4 sides.
 - KIT-CAR-TAVIRA: Loading kit (loading grid + 1 meter of tube).
 - BT: Base with height adjustable legs.
 - KIT WIFI 1: Kit Wifi for remote control.



Detail Kit-Marco4-Tavira



Detail Kit-Car-Tavira



Detail BT



BRUNO-SLIM

Slim Insert

A+

kW 9,5 - 3,6
Max.-min power.

kW 8,4
Nominal power

210 m³
Heating volume

88 - 93 %
Performance

1,9 - 0,78 kg/h
Consumption

11,6 kg
Hopper capacity

1x270 m³/h
Forced ventilation

944	1191	265
Width	Height	Depth

Drawing page: 108

Main features:

- Includes Oasys Plus Technology.
 - Programmable: daily, weekly and weekend.
 - Ceramic ignitor: faster ignition.
 - Includes pellet load level sensor.
 - Includes loading kit (loading grid + 1 meter of tube). Possibility of front or side pellet loading.
 - Interior in vermiculite.
 - Black screen-printed glass.
 - Includes base with height adjustable legs.
 - Includes 4 sides frame as standard.
 - Includes remote control with screen.
 - Includes glove.
- More info page: 101

Optional elements:

- KIT-FIR-BRU: Interior in Firetek.
- KIT WIFI 1: Kit Wifi for remote control.



**THE NARROWEST INSERT ON THE MARKET,
ONLY 26,5 CM DEPTH**



NEVA

Pellet insert

A+

kW 11 - 4,6
Max.-min power.

kW 10
Nominal power

250 m³
Heating volume

90 - 91 %
Performance

2,2 - 1,2 kg/h
Consumption

16 kg
Hopper capacity

1x380 m³/h
Forced ventilation

748	615	608
Width	Height	Depth
Drawing page: 108		

Main features:

- Includes Oasys Plus Technology.
- Programmable: daily, weekly and weekend.
- Includes pellet load level sensor.
- Channelling up to 5 metres via optional kit (KIT-C-N)
- Includes Independent Channelling System (ICS) that allows to turn off, on and regulate the turbine of the optional channelling kit in an independent way with respect to the stove.
- Removable front drawer for loading pellet
- Cast iron combustion chamber and burner.
- Black screen-printed glass.
- Includes 3 sides frame as standard.
- Includes remote control with screen.
- Includes glove.

More info page: 101

Optional elements:

- KIT-C-N: Kit to channel air up to 5 meters away by 1 outlet of 80 mm ø with turbine of 130 m³/h.
- KIT WIFI 1: Kit Wifi for remote control.
- KIT-CAR-NEVA: Loading kit (loading grid + 1 meter of tube). Possibility of front or side pellet loading.
- BN: Base with height adjustable legs.
- KIT-MARCO4-NEVA: Lower profile of the frame to convert to 4 sides.
- M-94: 4 sides frame in screen-printed black glass.



Detail Kit-Marco4-Neve



Detail BN



FREE SERIES

Stoves without electricity

The Free Series from Bronpi is an innovative range of pellet stoves that operate without electricity, offering an efficient and environmentally friendly solution to heat your home. Designed for comfort and autonomy, these stoves combine advanced technology with a sleek, functional design.

Choose the Bronpi Free Series and enjoy efficient, safe and environmentally friendly heating without relying on electricity.

Bronpi's Free Series: Natural Heat without Electricity.

Main features:

- Stoves without electricity.
 - Available in 2 powers.
 - Triple combustion system.
 - Double chamber system.
 - Airtight hopper.
 - Adjustable draft valve.
 - Includes glove.
- More info page: 102

Optional elements:

- B-FREE: Optional base of natural wood for Free-6 model.



Free Series
the series of pellet stoves
without electricity



FREE SERIES

Available versions



A+									
Model	Max.-min. power	Nominal power	Heating volume	Performance	Consumption	Hopper capacity	Width	Height	Depth
FREE-6	kW 7 - 2,7	kW 6	150 m³	91 - 91 %	1,2 - 0,6 kg/h	7 kg	370	768	371
FREE-11	kW 12 - 4	kW 10	250 m³	91 - 93 %	2,3 - 0,9 kg/h	17 kg	543	1030	571

Drawings page: 108



Optional base of natural wood
ref. B-FREE detail (only Free-6 model)

Free Series
the series of pellet stoves
without electricity

NICOL

Cast iron stove

A+

kW 7 - 4
Max.-min power.

kW 6
Nominal power

150 m³
Heating volume

89 - 93 %
Performance

1,4 - 0,95 kg/h
Consumption

9 kg
Hopper capacity

1x270 m³/h
Forced ventilation

669	679	542
Width	Height	Depth
Drawing page: 109		

Main features:

- Includes Oasys Plus Technology.
- Programmable: daily, weekly and weekend.
- Ceramic ignitor: faster ignition.
- Airtight hopper.
- Top loading
- Possibility of upper or rear smoke outlet.
- Cold hands handle.
- Completely manufactured in cast iron.
- Black screen-printed glass.
- Includes remote control with screen.
- Includes glove and stainless steel "T".

More info page: 102

Optional elements:

- KIT WIFI I: Kit Wifi for remote control.



Cold hands handle detail.



MINERVA-SLIM

Stove with super reduced measures ideal for small spaces.

A++

kW 6,7 - 2,9

Max.-min power.

kW 6,2

Nominal power

155 m³

Heating volume

92 - 90 %

Performance

1,33 - 0,65 kg/h

Consumption

6,5 kg

Hopper capacity

1x230 m³/h

Forced ventilation

632 | 800 | 209

Width Height Depth

Drawing page: 109

Main features:

- Includes Oasys Plus Technology.
- Includes Confortek System: Auto and Soft-Night.
- Programmable: daily, weekly and weekend.
- Left side smoke outlet.
- Airtight hopper.
- Cold hands handle.
- Interior in vermiculite.
- Cast iron burner.
- Installation on the floor or wall (with Kit-C-Minerva).
- Includes glove.

More info page: 102

Optional elements:

- KIT WIFI 2: Kit Wifi for remote control.
- KIT-C-MINERVA: wall mounted fixture.

Possibility of installation on the floor or hanging on the wall. (with KIT-C-MINERVA).



Available versions



MINERVA-SLIM-MF



MINERVA-SLIM-NE

**THE NARROWEST STOVE ON THE MARKET,
ONLY 20,9 CM DEPTH**

TINA

Pellet stove

A++

kW 7 - 3,2

Max.-min power.

kW 6,3

Nominal power

158 m³

Heating volume

94 - 95 %

Performance

1,5 - 0,8 kg/h

Consumption

16 kg

Hopper capacity

1x270 m³/h

Forced ventilation

477 | 952 | 503

Width Height Depth

Drawing page: 109

Main features:

- Includes Oasys Technology.
- Programmable: daily, weekly and weekend.
- Interior in vermiculite.
- Cast iron burner.
- Includes glove.
- More info page: 102

Optional elements:

- KIT WIFI 1: Kit Wifi for remote control.
- PE-029: Remote control.

Available versions



TINA-MO



TINA-MF



TINA-NE



TREBOL



Stove with Wifi

A+

kW 9 - 3,8
Max.-min power.
kW 8
Nominal power
200 m³
Heating volume
90 - 93 %
Performance
1,9 - 0,88 kg/h
Consumption
16 kg
Hopper capacity
1x270 m³/h
Forced ventilation
524 | 997 | 498
Width Height Depth
Drawing page: 109

- Main features:**
- Wifi included as standard to control the stove by means of an APP.
 - Includes Oasys Plus Technology.
 - Includes Confortek System: Auto, Soft-Night and Manual-Smart.
 - Silent. Possibility of total disconnection of the turbine in Soft-Night mode.
 - Programmable: daily, weekly and weekend.
 - Ceramic ignitor: faster ignition.
 - Airtight hopper.
 - Channelling up to 5 metres via optional kit (Kit-C-9N).
 - Includes Independent Channelling System (ICS) that allows to turn off, on and regulate the turbine of the optional channelling kit in an independent way with respect to the stove.
 - Interior in vermiculite.
 - Cast iron burner.
 - Includes cast iron heat exchanger-accumulator.
 - Includes glove and stainless steel "T".
- More info page: 102

- Optional elements:**
- KIT-C-9N: Kit to channel air up to 5 meters away by 1 outlet of 80 mm ø with turbine of 130 m³/h.
 - KIT-F-9: Cast iron plates kit for the interior of the combustion chamber.

Available versions



TREBOL-NU



TREBOL-MF



TREBOL-NE



AIR SERIES

ELIZ
ERS
EX
PIER
FLOW
FALL
GAR
LIBE
HIGH
HIGH

RITA

Pellet stove

A+

kW 9 - 3,8
Max.-min power.

kW 8
Nominal power

200 m³
Heating volume

90 - 93 %
Performance

1,9 - 0,88 kg/h
Consumption

16 kg
Hopper capacity

1x270 m³/h
Forced ventilation

486	1000	513
Width	Height	Depth

Drawing page: 109

Main features:

- Includes Oasys Plus Technology.
 - Includes Confortek System: Auto, Soft-Night, Manual-Smart and Energy.
 - Silent. Possibility of total disconnection of the turbine in Night and Smart modes.
 - Programmable: daily, weekly and weekend.
 - Channelling up to 5 metres via optional kit (Kit-C-9N)
 - Includes Independent Channelling System (ICS) that allows to turn off, on and regulate the turbine of the optional channelling kit in an independent way with respect to the stove.
 - Cast iron door, top, burner, interior and front grate.
 - Includes cast iron heat exchanger-accumulator.
 - Includes glove and stainless steel "T".
- More info page: 102

Optional elements:

- KIT WIFI 1: Kit Wifi for remote control.
- KIT-C-9N: Kit to channel air up to 5 meters away by 1 outlet of 80 mm ø with turbine of 130 m³/h.
- PE-029: Remote control.

Available versions



RITA-GR



RITA-MF

NINA

Corner stove

A+

kW 9 - 3,8
Max.-min power.

kW 8
Nominal power

200 m³
Heating volume

90 - 93 %
Performance

1,9 - 0,88 kg/h
Consumption

16 kg
Hopper capacity

1x270 m³/h
Forced ventilation

718 | 970 | 508
Width Height Depth
Drawing page: 109

Main features:

- Includes Oasys Plus Technology.
 - Includes Confortek System: Auto, Soft-Night, Manual-Smart and Energy.
 - Silent. Possibility of total disconnection of the turbine in Night and Smart modes.
 - Programmable: daily, weekly and weekend.
 - Channelling up to 5 metres via optional kit (Kit-C-9N)
 - Includes Independent Channelling System (ICS) that allows to turn off, on and regulate the turbine of the optional channelling kit in an independent way with respect to the stove.
 - Interior in vermiculite.
 - Cast iron burner.
 - Includes cast iron heat exchanger-accumulator.
 - Includes glove and stainless steel "T".
- More info page: 103

Optional elements:

- KIT WIFI 1: Kit Wifi for remote control.
- KIT-C-9N: Kit to channel air up to 5 meters away by 1 outlet of 80 mm ø with turbine of 130 m³/h.
- KIT-F-9: Cast iron plates kit for the interior of the combustion chamber.
- PE-029: Remote control.

Available versions



NINA-MO

NINA-MF

NINA-NE



KIRA

Pellet stove

A+

kW 9 - 3,8

Max.-min power.

kW 8

Nominal power

200 m³

Heating volume

90 - 93 %

Performance

1,9 - 0,88 kg/h

Consumption

16 kg

Hopper capacity

1x270 m³/h

Forced ventilation

451 | 1008 | 477

Width Height Depth

Drawing page: 109

Main features:

- Includes Oasys Plus Technology.
- Includes Confortek System: Auto, Soft-Night, Manual-Smart and Energy.
- Silent. Possibility of total disconnection of the turbine in Night and Smart modes.
- Programmable: daily, weekly and weekend.
- Channelling up to 5 metres via optional kit (Kit-C-9N)
- Includes Independent Channelling System (ICS) that allows to turn off, on and regulate the turbine of the optional channelling kit in an independent way with respect to the stove.
- Interior in vermiculite.
- Cast iron burner.
- Includes cast iron heat exchanger-accumulator.
- Includes glove and stainless steel "T".

More info page: 103

Optional elements:

- KIT WIFI 1: Kit Wifi for remote control.
- KIT-C-9N: Kit to channel air up to 5 meters away by 1 outlet of 80 mm ø with turbine of 130 m³/h.
- KIT-F-9: Cast iron plates kit for the interior of the combustion chamber.
- PE-029: Remote control.

Available versions



KIRA-MO

KIRA-MF

KIRA-NE



CIRA

Slim stove

A++

kW 8,5 - 4
Max.-min power.

kW 8
Nominal power

200 m³
Heating volume

92 - 93 %
Performance

1,8 - 1,1 kg/h
Consumption

17 kg
Hopper capacity

1x270 m³/h
Forced ventilation

919	1132	268
Width	Height	Depth

Drawing page: 109

Main features:

- Includes Oasys Plus Technology.
 - Programmable: daily, weekly and weekend.
 - Airtight hopper.
 - Cold hands handle.
 - Possibility of upper, side (left) or rear smoke outlet.
 - Channelling up to 5 metres via optional kit (Kit-C-P9). Upper or rear channelling.
 - Includes Independent Channelling System (ICS) that allows to turn off, on and regulate the turbine of the optional channelling kit in an independent way with respect to the stove.
 - Interior in vermiculite.
 - Cast iron burner.
 - Includes remote control with screen.
 - Includes glove and stainless steel "T".
- More info page: 104

Optional elements:

- KIT WIFI 1: Kit Wifi for remote control.
- KIT-C-9P: Kit to channel air up to 5 meters away by 1 outlet of 80 mm ø with turbine of 130 m³/h.

Available versions



CIRA-MF



CIRA-NE



LUPE

Slim stove

A++

kW 8,5 - 4
Max.-min power.

kW 8
Nominal power

200 m³
Heating volume

92 - 93 %
Performance

1,8 - 1,1 kg/h
Consumption

17 kg
Hopper capacity

1x270 m³/h
Forced ventilation

940	953	270
Width	Height	Depth
Drawing page: 110		

Main features:

- Includes Oasys Plus Technology.
 - Programmable: daily, weekly and weekend.
 - Airtight hopper.
 - Cold hands handle.
 - Possibility of upper, side (left) or rear smoke outlet.
 - Interior in vermiculite.
 - Cast iron burner.
 - Includes remote control with screen.
 - Includes glove and stainless steel "T".
- More info page: 104

Optional elements:

- KIT WIFI 1: Kit Wifi for remote control.

Available versions



LUPE-MF



LUPE-NB

ADRY

Slim stove

A+

kW 11 - 5

Max.-min power.

kW 10

Nominal power

250 m³

Heating volume

91 - 92 %

Performance

2,3 - 1,2 kg/h

Consumption

17 kg

Hopper capacity

1x380 m³/h

Forced ventilation

918 | 1133 | 307

Width Height Depth

Drawing page: 110

Main features:

- Includes Oasys Plus Technology.
- Programmable: daily, weekly and weekend.
- Airtight hopper.
- Cold hands handle.
- Possibility of upper, side (left) or rear smoke outlet.
- Channelling up to 9 meters by 2 outputs via optional kit. Upper or rear channelling.
- Includes Independent Channelling System (ICS) that allows to turn off, on and regulate the turbine of the optional channelling kit in an independent way with respect to the stove.
- Interior in vermiculite.
- Cast iron burner.
- Includes remote control with screen.
- Includes glove and stainless steel "T".

More info page: 104

Optional elements:

- KIT WIFI I: Kit Wifi for remote control.
- KIT-C-D: Right kit to channel air up to 9 meters away by 1 outlet of 80 mm ø with turbine of 130 m³/h. Possibility of control by means of a probe.
- KIT-C-I: Left kit to channel air up to 9 meters away by 1 outlet of 80 mm ø with turbine of 130 m³/h. Possibility of control by means of a probe.

Available versions



ADRY-MF



ADRY-NE



ADRY-P-G
(Grey stone version)



CLEO

Front glass slim stove

A+

kW 11 - 5
Max.-min power.

kW 10
Nominal power

250 m³
Heating volume

91 - 92 %
Performance

2,3 - 1,2 kg/h
Consumption

18 kg
Hopper capacity

1x380 m³/h
Forced ventilation

1005 | 1090 | 256
Width Height Depth
Drawing page: 110

Main features:

- Includes Oasys Plus Technology.
 - Programmable: daily, weekly and weekend.
 - Airtight hopper.
 - Possibility of upper, side (right) or rear smoke outlet.
 - Channelling up to 9 meters by 2 outputs via optional kit. Upper or rear channelling.
 - Includes Independent Channelling System (ICS) that allows to turn off, on and regulate the turbine of the optional channelling kit in an independent way with respect to the stove.
 - Interior in steel.
 - Cast iron burner.
 - Includes remote control with screen.
 - Includes glove.
- More info page: 104

Optional elements:

- KIT WIFI 1: Kit Wifi for remote control.
- KIT-C-D: Right kit to channel air up to 9 meters away by 1 outlet of 80 mm Ø with turbine of 130 m³/h. Possibility of control by means of a probe.
- KIT-C-I: Left kit to channel air up to 9 meters away by 1 outlet of 80 mm Ø with turbine of 130 m³/h. Possibility of control by means of a probe



↔ Slides 29 cm.
Sliding loading cover.



DORA

Slim stove

A+

kW 11 - 5

Max.-min power.

kW 10

Nominal power

250 m³

Heating volume

91 - 92 %

Performance

2,3 - 1,2 kg/h

Consumption

17 kg

Hopper capacity

1x380 m³/h

Forced ventilation

956 | 1122 | 268

Width Height

Drawing page: 110

268
Depth

Main features:

- Includes Oasys Plus Technology.
- Programmable: daily, weekly and weekend.
- Airtight hopper.
- Cold hands handle.
- Possibility of upper, side (left) or rear smoke outlet.
- Channelling up to 9 meters by 2 outputs via optional kit. Upper or rear channelling.
- Includes Independent Channelling System (ICS) that allows to turn off, on and regulate the turbine of the optional channelling kit in an independent way with respect to the stove.
- Interior in vermiculite.
- Cast iron burner.
- Includes remote control with screen.
- Includes glove and stainless steel "T".

More info page: 104

Optional elements:

- KIT WIFI 1: Kit Wifi for remote control.
- KIT-C-D: Right kit to channel air up to 9 meters away by 1 outlet of 80 mm ø with turbine of 130 m³/h. Possibility of control by means of a probe.
- KIT-C-I: Left kit to channel air up to 9 meters away by 1 outlet of 80 mm ø with turbine of 130 m³/h. Possibility of control by means of a probe.

Available versions



DORA-MF



DORA-NB

Gloss black colour version.



AIR SERIES



MILA

Stove with Wifi



A++

kW 11 - 4,8

Max.-min power.

kW 10,3

Nominal power

258 m³

Heating volume

93 - 95 %

Performance

2,3 - 1,1 kg/h

Consumption

22 kg

Hopper capacity

1x430 m³/h

Forced ventilation

615 | 1140 | 569

Width Height Depth

Drawing page: 110

Main features:

- Wifi included as standard to control the stove by means of an APP.
- Includes Oasys Plus Technology.
- Includes Confortek System: Auto, Soft-Night and Manual-Smart
- Silent. Possibility of total disconnection of the turbine in Soft-Night mode.
- Programmable: daily, weekly and weekend.
- Ceramic ignitor: faster ignition.
- Airtight hopper.
- Channelling up to 5 metres via optional kit (Kit-C-12N)
- Includes Independent Channelling System (ICS) that allows to turn off, on and regulate the turbine of the optional channelling kit in an independent way with respect to the stove.
- Interior in vermiculite.
- Cast iron burner.
- Includes cast iron heat exchanger-accumulator.
- Includes glove and stainless steel "T".

More info page: 103

Optional elements:

- KIT-C-12N: Kit to channel air up to 5 meters away by 1 outlet of 80 mm Ø with turbine of 130 m³/h.
- KIT-F-12: Cast iron plates kit for the interior of the combustion chamber.

Available versions



MILA-NU



MILA-MF



MILA-NE



NOA

Pellet stove

A++

kW 11 - 4,8

Max.-min power.

kW 10,3

Nominal power

258 m³

Heating volume

93 - 95 %

Performance

2,3 - 1,1 kg/h

Consumption

22 kg

Hopper capacity

1x430 m³/h

Forced ventilation

575 | 1151 | 582

Width Height

Depth

Drawing page: 110

Main features:

- Includes Oasys Plus Technology.
- Includes Confortek System: Auto and Soft-Night.
- Silent. Possibility of total disconnection of the turbine in Soft-Night mode.
- Programmable: daily, weekly and weekend.
- Channelling up to 5 metres via optional kit (Kit-C-12N).
- Includes Independent Channelling System (ICS) that allows to turn off, on and regulate the turbine of the optional channelling kit in an independent way with respect to the stove.
- Interior in vermiculite.
- Cast iron burner.
- Includes cast iron heat exchanger-accumulator.
- Includes glove and stainless steel "T".

More info page: 103

Optional elements:

- KIT WIFI 1: Kit Wifi for remote control.
- KIT-C-12N: Kit to channel air up to 5 meters away by 1 outlet of 80 mm ø with turbine of 130 m³/h.
- KIT-F-12: Cast iron plates kit for the interior of the combustion chamber.
- PE-029: Remote control.

Available versions



NOA-MO

NOA-MF

NOA-NE



NOA HORNO

Stove with oven

A+

kW 11,5 - 5
Max.-min power.

kW 10
Nominal power

250 m³
Heating volume

89 - 89 %
Performance

2,4 - 1,2 kg/h
Consumption

15 kg
Hopper capacity

1x430 m³/h
Forced ventilation

693	1361	515
Width	Height	Depth
Drawing page: 110		

Main features:

- Includes Oasys Plus Technology.
- Silent. Possibility of total disconnection of the turbine.
- Programmable: daily, weekly and weekend.
- Channelling up to 5 metres via optional kit (Kit-C-12H)
- Includes Independent Channelling System (ICS) that allows to turn off, on and regulate the turbine of the optional channelling kit in an independent way with respect to the stove.
- Interior in vermiculite.
- Cast iron burner.
- Stainless steel oven with stainless steel tray 480x400x60mm and grill 470x380mm.
- Includes remote control with screen.
- Includes glove and stainless steel "T".

More info page: 103

Optional elements:

- KIT WIFI 2: Kit Wifi for remote control.
- KIT-C-12H: Kit to channel air up to 5 meters away by 1 outlet of 80 mm ø with turbine of 130 m³/h.

OVEN MODE-STOVE MODE

In OVEN MODE, the oven is self-regulated to keep the oven at the cooking temperature chosen by the user for as long as desired. For example, set the oven to 180°C for 30 minutes. Oven with programmable timer. After the cooking time chosen by the user has expired, the stove sends out a warning. In OVEN MODE, the oven works to reach the ambient temperature chosen by the user, regardless of the cooking temperature reached by the oven.

Available versions



NOA-HORNO-MF



NOA-HORNO-NE

PRINCESA

Corner stove

A++

kW 11 - 4,8
Max.-min power.

kW 10,3
Nominal power

258 m³
Heating volume

93 - 95 %
Performance

2,3 - 1,1 kg/h
Consumption

22 kg
Hopper capacity

1x430 m³/h
Forced ventilation

823	1095	587
Width	Height	Depth

Drawing page: 110

Main features:

- Includes Oasis Plus Technology.
 - Includes Confortek System: Auto and Soft-Night.
 - Silent. Possibility of total disconnection of the turbine in Soft-Night mode.
 - Programmable: daily, weekly and weekend.
 - Channelling up to 5 metres via optional kit (Kit-C-12N).
 - Includes Independent Channelling System (ICS) that allows to turn off, on and regulate the turbine of the optional channelling kit in an independent way with respect to the stove.
 - Interior in vermiculite.
 - Cast iron burner.
 - Includes cast iron heat exchanger-accumulator.
 - Includes glove and stainless steel "T".
- More info page: 103

Optional elements:

- KIT WIFI 1: Kit Wifi for remote control.
- KIT-C-12N: Kit to channel air up to 5 meters away by 1 outlet of 80 mm ø with turbine of 130 m³/h.
- KIT-F-12: Cast iron plates kit for the interior of the combustion chamber.
- PE-029: Remote control.

Available versions



PRINCESA-MF



PRINCESA-NE

ABRIL-EXTRA

Channelling stove with double automatic burner cleaning system

A+

kW 11 - 5
Max.-min power.

kW 10,6
Nominal power

265 m³
Heating volume

91 - 93 %
Performance

2,3 - 1 kg/h
Consumption

16 kg
Hopper capacity

1x430 m³/h

1x130 m³/h
Forced ventilation

548	1047	579
Width	Height	Depth
Drawing page: 111		

Main features:

- Double burner cleaning system. Rotating 360° burner base and brushing.
 - Includes Oasys Plus Technology.
 - Programmable: daily, weekly and weekend.
 - Includes Independent Channelling System (ICS) that allows to turn off, on and regulate the turbine of the optional channelling kit in an independent way with respect to the stove.
 - Ceramic ignitor: faster ignition.
 - Silent. Possibility of total disconnection of the turbine.
 - Airtight hopper.
 - Possibility of upper, side or rear smoke outlet.
 - Interior in vermiculite.
 - High Performance Burner.
 - Includes cast iron heat exchanger-accumulator.
 - Cast iron door and top.
 - Includes glove.
- More info page: 103

Optional elements:

- KIT WIFI 1: Kit Wifi for remote control.

Available versions



ABRIL-EX-MF



ABRIL-EX-NE



AIR SERIES

REVOLUTION IN AUTOMATIC CLEANING

ADEL

Pellet stove

A++

kW 14,3 - 6
Max.-min power.

kW 13
Nominal power

325 m³
Heating volume

92 - 94 %
Performance

3 - 1,4 kg/h
Consumption

22 kg
Hopper capacity

1x430 m³/h
Forced ventilation

504	1110	514
Width	Height	Depth
Drawing page: 111		

Main features:

- Includes Oasis Plus Technology.
 - Programmable: daily, weekly and weekend.
 - Ceramic ignitor: faster ignition.
 - Channelling up to 9 meters for two outputs via optional kit.
 - Includes Independent Channelling System (ICS) that allows to turn off, on and regulate the turbine of the optional channelling kit in an independent way with respect to the stove.
 - Interior in vermiculite.
 - Cast iron burner.
 - Includes cast iron heat exchanger.
 - Includes glove and stainless steel "T".
- More info page: 103

Optional elements:

- KIT WIFI 1: Kit Wifi for remote control.
- KIT-C-15N-D: Right kit to channel air up to 9 meters away by 1 outlet of 80 mm ø with turbine of 130 m³/h. Possibility of control by means of a probe.
- KIT-C-15N-I: Left kit to channel air up to 9 meters away by 1 outlet of 80 mm ø with turbine of 130 m³/h. Possibility of control by means of a probe.
- PE-029: Remote control.

Available versions



ADEL-MF



ADEL-NE

CORAL

Pellet stove

A++

kW 14,3 - 6
Max.-min power.

kW 13
Nominal power

325 m³
Heating volume

92 - 94 %
Performance

3 - 1,4 kg/h
Consumption

22 kg
Hopper capacity

1x430 m³/h
Forced ventilation

555 | 1171 | 543
Width Height Depth
Drawing page: 111

Main features:

- Includes Oasys Plus Technology.
 - Programmable: daily, weekly and weekend.
 - Ceramic ignitor: faster ignition.
 - Airtight hopper.
 - Channelling up to 9 meters for two outputs via optional kit.
 - Includes Independent Channelling System (ICS) that allows to turn off, on and regulate the turbine of the optional channelling kit in an independent way with respect to the stove.
 - Interior in cast iron.
 - Cast iron burner.
 - Includes cast iron heat exchanger.
 - Includes glove and stainless steel "T".
- More info page: 103

Optional elements:

- KIT WIFI 1: Kit Wifi for remote control.
- KIT-C-15N-D: Right kit to channel air up to 9 meters away by 1 outlet of 80 mm ø with turbine of 130 m³/h. Possibility of control by means of a probe.
- KIT-C-15N-I: Left kit to channel air up to 9 meters away by 1 outlet of 80 mm ø with turbine of 130 m³/h. Possibility of control by means of a probe.
- PE-029: Remote control.

Available versions



CORAL-PL



CORAL-MF

EVA

Pellet stove

A++

kW 14,3 - 6
Max.-min power.

kW 13
Nominal power

325 m³
Heating volume

92 - 94 %
Performance

3 - 1,4 kg/h
Consumption

22 kg
Hopper capacity

1x430 m³/h
Forced ventilation

555		1119		543
Width		Height		Depth
Drawing page: 111				

Main features:

- Includes Oasys Plus Technology.
 - Programmable: daily, weekly and weekend.
 - Ceramic ignitor: faster ignition.
 - Airtight hopper.
 - Channelling up to 9 meters for two outputs via optional kit.
 - Includes Independent Channelling System (ICS) that allows to turn off, on and regulate the turbine of the optional channelling kit in an independent way with respect to the stove.
 - Interior in cast iron.
 - Cast iron burner.
 - Includes cast iron heat exchanger.
 - Includes glove and stainless steel "T".
- More info page: 103

Optional elements:

- KIT WIFI 1: Kit Wifi for remote control.
- KIT-C-15N-D: Right kit to channel air up to 9 meters away by 1 outlet of 80 mm ø with turbine of 130 m³/h. Possibility of control by means of a probe.
- KIT-C-15N-I: Left kit to channel air up to 9 meters away by 1 outlet of 80 mm ø with turbine of 130 m³/h. Possibility of control by means of a probe.
- PE-029: Remote control.





HYDRO SERIES



The models of the Hydro Series from Bronpi allow you to integrate biomass heating with your home radiators or under floor heating system.

These stoves and pellet boilers heat water to supply the entire house, combining energy efficiency and savings with the pleasure of sustainable and clean heating.

ALPES HYDRO

Hydro Insert

A++

kW 14 - 5
Max.-min power.

kW 12,8
Nominal power

kW 11,2 - 4,1
Max.-min. power to the water

320 m³
Heating volume

92 - 96 %
Performance

3 - 1,1 kg/h
Consumption

34 kg
Hopper capacity

80
Radiator elements

112 m²
Under floor heating

808		713		608
Width		Height		Depth

Drawing page: III

Main features:

- Includes Oasys Plus Technology.
- Programmable: daily, weekly and weekend.
- Heating and DHW management.
- Includes pellet load level sensor.
- Pressure transducer.
- Automatic drain.
- Removable front drawer for loading pellet
- Cast iron burner.
- Includes remote control with screen.
- Includes 3 sides frame as standard.
- Includes glove.

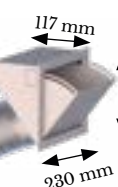
More info page: 105

Optional elements:

- KIT WIFI 1: Kit Wifi for remote control.
- KIT-CAR-ALPES: Loading kit (loading grid + 1 meter of tube).
- BA: Base with height adjustable legs.
- KIT-MARCO4-ALPES Lower profile of the frame to convert to 4 sides.
- VAL-02: Anti-condensation valve of 3x1"



Detail Kit-Marco4-Alpes



Detail Kit-Car-Alpes



Detail BT

NOA HYDRO

**NEW
VERSION**

Hydro stove

A++

kW 17 - 7,2

Max.-min power.

kW 15,8

Nominal power

kW 14,3 - 5,2

Max.-min. power to the water

387 m³

Heating volume

93 - 96 %

Performance

3,9 - 1,5 kg/h

Consumption

19 kg

Hopper capacity

100

Radiator elements

140 m²

Under floor heating

572 | 1109 | 597

Width | Height | Depth

Drawing page: 111

Main features:

- Includes Oasys Plus Technology.
- Programmable: daily, weekly and weekend.
- Pressure transducer.
- Automatic drain.
- Cast iron burner.
- Includes glove.

More info page: 105

Optional elements:

- KIT WIFI 1: Kit Wifi for remote control.
- KIT-V-H: Ventilation kit for air forced convection.
- VAL-02: Anti-condensation valve of 3x1".
- PE-029: Remote control.

Available versions



NOA-HYDRO-MO



NOA-HYDRO-MF



NOA-HYDRO-NE



HYDRO SERIES

CLARA HYDRO

Hydro slim stove

A++

kW 15 - 6
Max.-min power.

kW 14
Nominal power

kW 12 - 5,8
Max.-min. power to the water

350 m³
Heating volume

93 - 96 %
Performance

3,2 - 1,5 kg/h
Consumption

25 kg
Hopper capacity

85
Radiator elements

120 m²
Under floor heating

1013	934	287
Width	Height	Depth

Drawing page: 111

Main features:

- Includes Oasys Plus Technology.
 - Programmable: daily, weekly and weekend.
 - Heating and DHW management.
 - Pressure transducer.
 - Automatic drain.
 - Possibility of upper, side (right) or rear smoke outlet.
 - Cast iron burner.
 - Includes remote control with screen.
 - Includes glove.
- More info page: 105

Optional elements:

- KIT WIFI 1: Kit Wifi for remote control.
- VAL-02: Anti-condensation valve of 3x1".



CARLOTA-NE

Hydro stove

A+

kW 23 - 7,2
Max.-min power.

kW 20,2
Nominal power

kW 18 - 6,8
Max.-min. power to the water

507 m³
Heating volume

91 - 96 %
Performance

4,9 - 1,5 kg/h
Consumption

48 kg
Hopper capacity

129
Radiator elements

180 m²
Under floor heating

607	1277	695
Width	Height	Depth

Drawing page: 111

Main features:

- Includes Oasys Technology.
 - Programmable: daily, weekly and weekend.
 - Fully automated heat exchanger and burner cleaning.
 - Heating and DHW management.
 - Airtight hopper.
 - Automatic drain.
 - Pressure transducer.
 - Thermal insulation of the chamber.
 - Cast iron burner.
 - Stainless steel scrapers.
 - Includes glove.
- More info page: 105

Optional elements:

- PE-029: Remote control.
- VAL-03: Anti-condensation valve of 3x1 1/4".



HYDROBOX

Reduced size boiler

A++

kW 17 - 7,2
Max.-min. power.

kW 15,8
Nominal power

kW 14,3 - 5,2
Max.-min. power to the water

395 m³
Heating volume

93 - 96 %
Performance

3,9 - 1,5 kg/h
Consumption

30 kg
Hopper capacity

113
Radiator elements

140 m²
Under floor heating

611 | 880 | 625
Width | Height | Depth
Drawing page: 112

Main features:

- Includes Oasys Plus Technology.
- Programmable: daily, weekly and weekend.
- LCD-TFT colour screen of 4,3" multitouch for boiler programming and management.
- Patented heat exchange system.
- Heating and DHW management.
- Includes pellet load level sensor.
- Thermal insulation of the chamber.
- Door with interior in vermiculite and visor with double glazing.
- External door with thermal insulation.
- Airtight hopper.
- Pressure transducer.
- Includes automatic drain.
- Cast iron burner.
- Includes glove.

More info page: 105

Optional elements:

- KIT WIFI 2: Kit Wifi for remote control.
- VAL-02: Anti-condensation valve of 3x1".



Double door detail.

Suggestion for
installation in
kitchen.



Suggestion of
charging through
the counter.



HYDROTEX 27

Boiler

HYDROCONFORT 27

Automatic cleaning boiler

A+

kW 27 - 7
Max.-min power.

kW 26
Nominal power

kW 26 - 7
Max.-min. power to the water

650 m³
Heating volume

84 - 91 %
Performance

6,4 - 1,6 kg/h
Consumption

60 kg
Hopper capacity

186
Radiator elements

260 m²
Under floor heating

HydroTex-27

725	1380	844
Width	Height	Depth
Drawing page: 112		

HydroConfort-27

727	1380	987
Width	Height	Depth
Drawing page: 112		

Main features:

- Double burner cleaning system. Rotating 360° burner base and brushing. (HydroConfort-27)
- Ash compactor system with large capacity ashtray and ash level indicator. Includes handle and wheels on the ashtray for easy transport. (Hydroconfort-27). Includes Oasys Plus Technology.
- Programmable: daily, weekly and weekend.
- LCD-TFT colour screen of 4,3" multitouch for boiler programming and management.
- Patented heat exchange system.
- Heating and DHW management.
- Includes pellet load level sensor.
- Airtight hopper.
- Thermal insulation of the chamber.
- Pressure transducer.
- Includes automatic drain.
- Cast iron burner.
- Includes glove.
- More info page: 105

Optional elements:

- KIT WIFI 2: Kit Wifi for remote control.
- VAL-03: Anti-condensation valve of 3x1" 1/4.
- DEP-HYDROTEX: Side load tank of 411 liters (260 kg). Possibility to install left or right.
- DEP-HYDROCONFORT: Side load tank of 411 liters (260 kg). Possibility to install left or right.

Ash compactor detail
Hydroconfort-27.



Available versions



Optional pellet
tank detail.



HYDROTEX-27
Version without
automatic cleaning.



HYDROCONFORT-27
Version with
automatic cleaning.





GRILLES AND ACCESSORIES

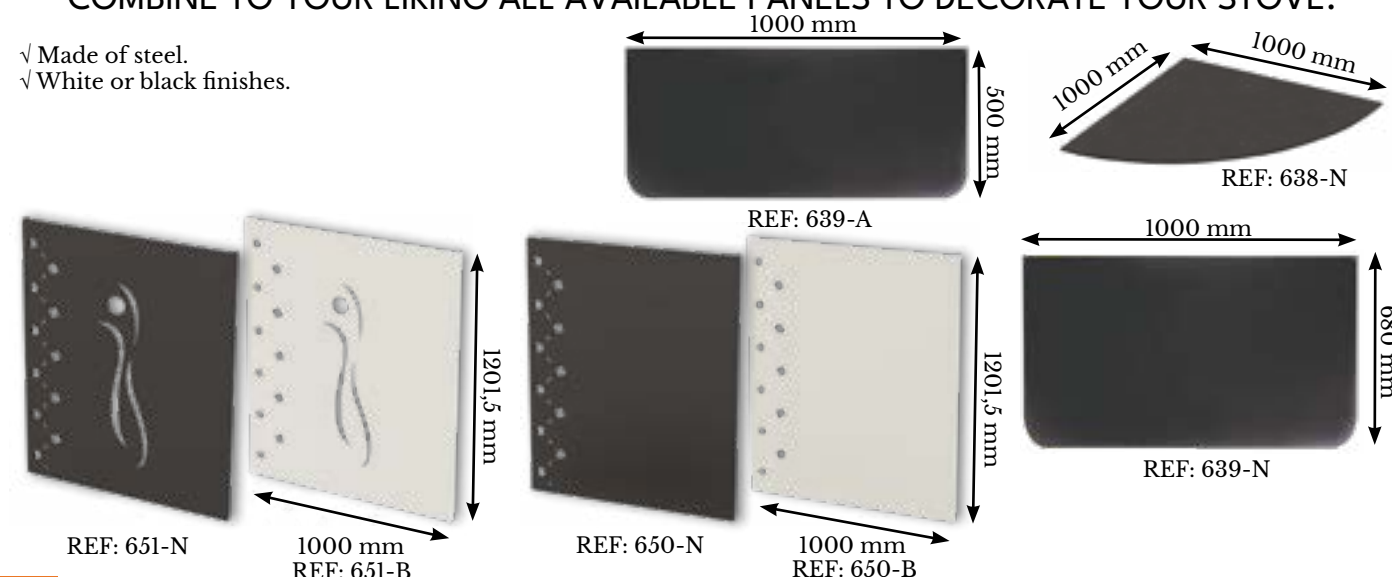
Bronpi offers a complete selection of accessories and grilles designed to complement and optimize the heating experience. Practical, durable solutions tailored to each need to get the most out of your system.

DECORATIVE PANELS



COMBINE TO YOUR LIKING ALL AVAILABLE PANELS TO DECORATE YOUR STOVE.

- ✓ Made of steel.
- ✓ White or black finishes.



KIT WIFI

KIT WIFI TO CONTROL BY MEANS OF INTERNET

With the WIFI KIT it is now possible to control your stove through any device with internet access (computer, mobile, tablet...). Through an application, you will access your stove/boiler to know its status, modify the temperature and power, turn on and off, schedule daily turns on and off, etc. You must have WIFI internet at the place where you install the equipment.



HOW CONTROL YOUR STOVE BY MEANS OF BLUETOOTH WITH THE KIT WIFI 1

Ref. KIT WIFI 1: NICOL, TINA, NINA, KIRA, RITA, PRINCESA, NOA, TAVIRA, BRUNO-SLIM, NEVA, LUPE, CIRA, CLEO, DORA, ADRY, ABRIL-EXTRA, CORAL, EVA, ADEL, ALPES-HYDRO, NOA-HYDRO, CLARA-HYDRO.



Ref. KIT WIFI 2: MINERVA-SLIM, NOA HORNO, HYBRID, HYDROBOX, HYDROTEx, HYDROCONFORT.

ANTI-CONDENSATION THERMOSTATIC VALVE VAL-02 | VAL-03

The valve allows to keep constant the temperature of the water returning to the boiler at a selected value of a temperature of 55° C.

VAL-02 : anti-condensation thermostatic valve of 3 x 1"

VAL-03 : anti-condensation thermostatic valve of 3 x 1 1/4"



CLEANING ACCESSORIES



- Function: suction/blowing.
- 1 meter metal tube with corner adapter
- Motor: 230V 50-60HZ 800W.
- Metal tank.
- Capacity: 20 litres.

Ref. ASPIRADOR
ASH VACUUM CLEANER



REF. 23-N (150 ML)
Black heat-resistant
spray Paint 150 ml.



REF. 23 (400 ML)
Black heat-resistant
spray paint 400ml.



REF. 29
Repair kit (includes black ceramic
rope 10mm and silicone).

REF. 31
Repair kit (includes black ceramic
rope 12mm and silicone).



REF. 24
Self-adhesive
ceramic fibre.



REF. 22
Fire cement.



REF. 25
Box with 10 anti-soot
envelopes.

GRILLES

SIMPLE GRILLE



ADJUSTABLE GRILLE



R Series

Check measures in price list.

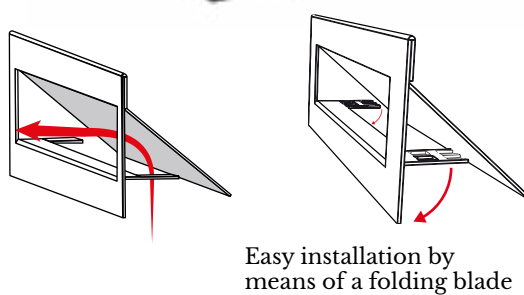
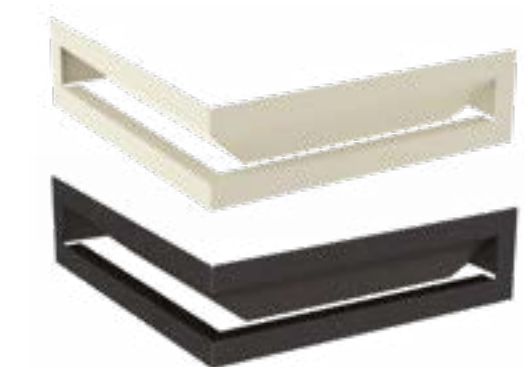


R and RE Series

- Specific design for an ideal extraction of the heat from your fireplace thanks to the included directioner, which allows a continuous air outlet.

RE Series

Check measures in price list.



Malla Series

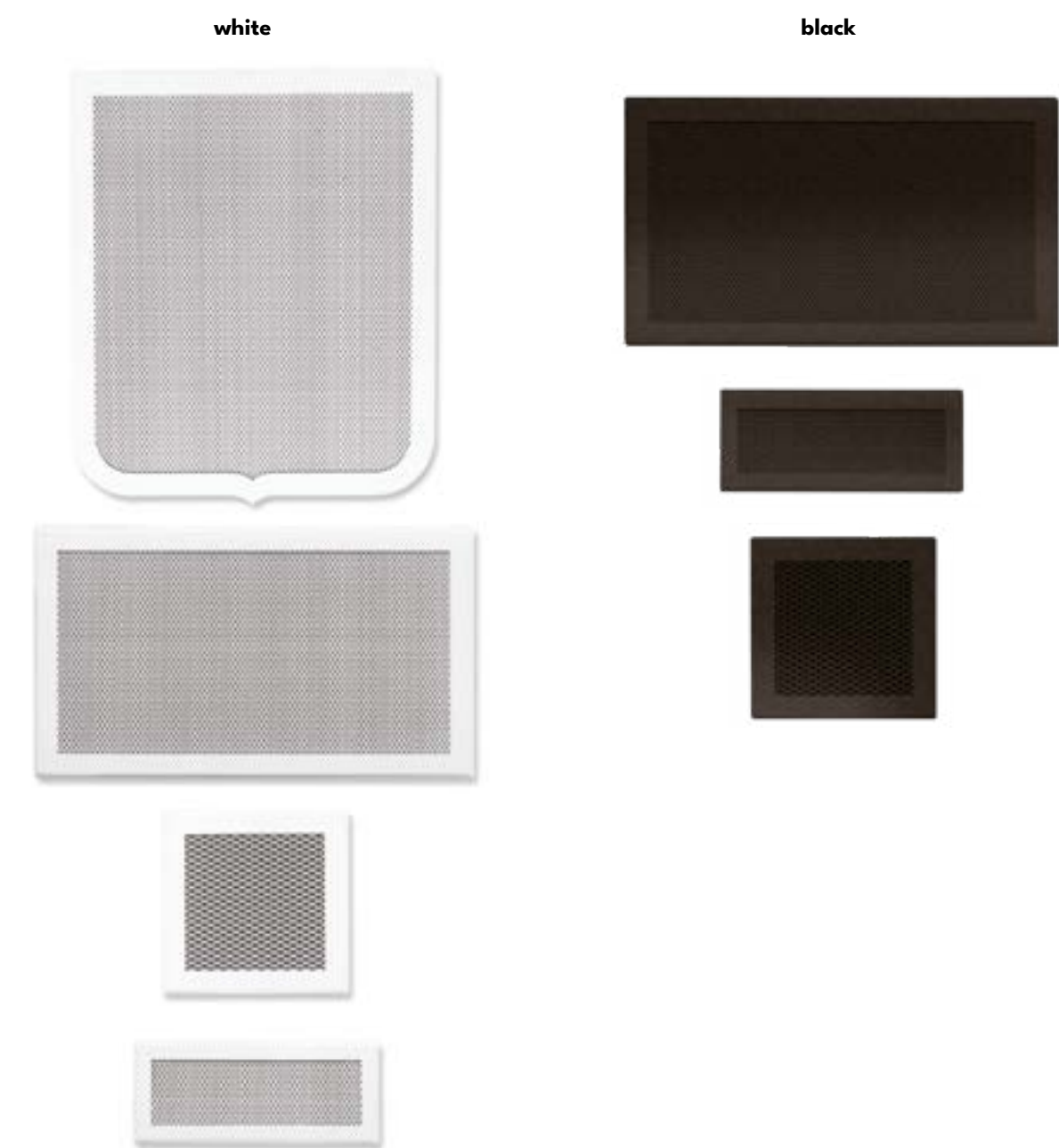
Check measures in price list.



GRILLES

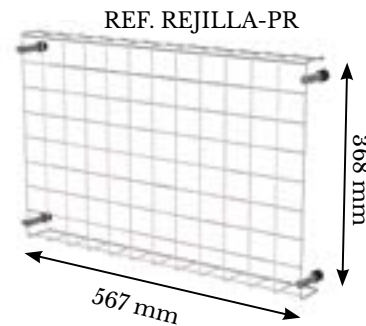
M-D Series

Check measures in price list.



GLASS PROTECTION GRID REJILLA-PR

Protective glass grid made of chromed steel rods. Attachment to the stove by means of magnets that move in different positions. See compatible models





TECHNICAL FEATURES

Technical features

HYBRID: WOOD & PELLET



TECHNICAL DATA	INSERT-HYBRID		HYBRID	
	PELLET	WOOD	PELLET	WOOD
kW Max.-Min.	11 - 4	14 - 3,9	11 - 4,8	11 - 4,5
kW Nom.	9	11	10	10
m³	225	275	250	250
Performance %	94 - 91	84	89 - 91	84
Consumption kg/h	2 - 0,9	3	2,3 - 1,1	2,5
Hopper capacity kg	11	-	15	-
Electrical power W	150 - 300	-	150 - 300	-
Smoke outlet Ø mm	150		150	
Air suction Ø mm	50		50	
	1x400 m³/h		1x380 m³/h	
	155 / 157		150	
cms	-	50	-	40
General measures Width x Height x Depth	848 746 608		561 1175 566	
Useful combustion chamber measures Width x Height x Depth	510 250 275		350 363 270	
Burner	Cast iron	-	Cast iron	-
Outer material	Steel and cast iron		Steel and cast iron	
Combustion chamber material	Vermiculite or Firetek		Vermiculite	
Safety systems	S1: Pellet security thermostat Pressure switch		S1: Pellet security thermostat Pressure switch	
Combustion air adjustment	√ (only wood)		√ (only wood)	
SYSTEMS				
Triple combustion System	√		√	
Clean Glass System	√		√	
Oasys Plus System	√		√	
Double Chamber System	√		√	
Modulation System	√		√	
Compatible model with kit Wifi	√ (As standard)		√ (Optional)	
Programmable	√		√	
+ Info	Pag.: 22		Pag.: 24	
Energy efficiency				
Certifications				

Technical features

AIR SERIES



TECHNICAL DATA	TAVIRA	BRUNO-SLIM	NEVA
kW Max.-Min.	7 - 4	9,5 - 3,6	11 - 4,6
kW Nom.	6	8,4	10
m³	150	210	250
Performance %	89 - 93	88 - 93	90 - 91
Consumption kg/h	1,4 - 0,95	1,9 - 0,78	2,2 - 1,2
Autonomy h	7 - 11	6,1 - 14,9	7,2 - 13,3
Hopper capacity kg	11	11,6	16
Electrical power W	150 - 300	150 - 300	150 - 300
Channelling Meters x n° outputs (Ø mm)	-	-	OPTIONAL 5 m. x 1 (80)
Smoke outlet Ø mm	80	80	80
Air suction Ø mm	40	40	50
Wind	1x270 m³/h	1x270 m³/h	1x380 m³/h
Kg	85	80	115
General measures Width x Height x Depth	600 555 537	944 1276 / 1106 265	748 615 608
Burner	Cast iron	Steel	Cast iron
Outer material	Steel	Steel	Steel
Combustion chamber material	Cast iron	Vermiculite / Firetek (opc.)	Cast iron
Safety systems	S3: Security thermostat, pressure switch and micro-switch	S1: Security probe and pressure switch	S3: Security thermostat, pressure switch and micro-switch
Included accessories	Remote control	Remote control	Remote control
SYSTEMS			
Oasys / Oasys Plus System	Oasys Plus	Oasys Plus	Oasys Plus
FastOn System	√	√	-
Clean Glass System	√	√	√
Double Chamber System	√	√	√
Pellet load level sensor	√	√	√
Modulation System	√	√	√
Wifi	OPTIONAL KitWifi1	OPTIONAL KitWifi1	OPTIONAL KitWifi1
Programmable	√	√	√
Silent: Turbine disconnection	-	-	-
+ Info	Pag.: 28	Pag.: 30	Pag.: 32
Energy efficiency			
Certifications			

Technical features

AIR SERIES



TECHNICAL DATA	FREE 6	FREE 11	NICOL	MINERVA-SLIM	TINA	TREBOL	RITA
kW Max.-Min.	7 - 2,7	12 - 4	7 - 4	6,7 - 2,9	7 - 3,2	9 - 3,8	9 - 3,8
kW Nom.	6	10	6	6,2	6,3	8	8
m³	150	250	150	155	158	200	200
Performance %	91 - 91	91 - 93	89 - 93	92 - 90	94 - 95	90 - 93	90 - 93
Consumption kg/h	1,2 - 0,6	2,3 - 0,9	1,4 - 0,95	1,33 - 0,65	1,5 - 0,8	1,9 - 0,88	1,9 - 0,88
Autonomy h	5,8 / 11,6	7,4 / 18,8	6 - 9	4,9 - 10	10,6 - 20	8,4 - 18	8,4 - 18
Hopper capacity kg	7	17	9	6,5	16	16	16
Airtight hopper	√	√	√	√	-	√	-
Electrical power W	-	-	150 - 300	150 - 300	60 - 300	60 - 300	60 - 300
Channelling Meters x n° outputs (Ø mm)	-	-	-	-	-	OPTIONAL 5 m. x 1 (80)	OPTIONAL 5 m. x 1 (80)
Smoke outlet Ø mm	80	100	80	80	80	80	80
Air suction Ø mm	60	80	40	40	40	50	50
Wind	-	-	1x270 m³/h	1x230 m³/h	1x270 m³/h	1x270 m³/h	1x270 m³/h
kg	60	100	160	63	74	95	114
General measures Width x Height x Depth	370 768 371	543 1030 571	669 679 542	632 800 209	477 952 503	524 997 498	486 1000 513
Measurements of the oven useful space Width x Height x Depth	-	-	-	-	-	-	-
Burner	Steel	Steel	Cast iron	Cast iron	Cast iron	Cast iron	Cast iron
Outer material	Steel	Steel	Cast iron	Steel	Steel	Steel	Steel and Cast iron
Combustion chamber material	Steel	Steel	Cast iron	Vermiculite	Vermiculite	Vermiculite Opc. Cast iron	Cast iron
Safety systems	-	-	S1: Security thermostat and pressure switch	S1: Security thermostat and pressure switch	S1: Security thermostat and pressure switch	S1: Security thermostat and pressure switch	S1: Security thermostat and pressure switch
Included accessories	-	-	Remote control and stainless steel "T"	-	-	Stainless steel "T"	Stainless steel "T"
SYSTEMS							
ConfortTek	-	-	-	Auto Soft	-	Auto Manual Soft	Auto Smart Night Energy
Oasys / Oasys Plus System	-	-	Oasys Plus	Oasys Plus	Oasys	Oasys Plus	Oasys Plus
FastOn System	-	-	√	-	-	√	-
Clean Glass System	√	√	√	√	√	√	√
Double Chamber System	√	√	√	√	√	√	√
Modulation System	-	-	√	√	√	√	√
Wifi	-	-	OPTIONAL KitWifi1	OPTIONAL KitWifi2	OPTIONAL KitWifi1	Included	OPTIONAL KitWifi1
Programmable	-	-	√	√	√	√	√
Silent: Turbine disconnection	-	-	-	-	-	√	√
Double cleaning of the Burner System	-	-	-	-	-	-	-
Triple combustion System	√	√	-	-	-	-	-
+ Info	Pag.: 34	Pag.: 34	Pag.: 38	Pag.: 40	Pag.: 42	Pag.: 44	Pag.: 46
Energy efficiency							



AIR SERIES



NINA	KIRA	MILA	NOA	NOA HORNO	PRINCESA	ABRIL EXTRA	ADEL	CORAL	EVA
9 - 3,8	9 - 3,8	11 - 4,8	11 - 4,8	11,5 - 5	11 - 4,8	11 - 5	14,3 - 6	14,3 - 6	14,3 - 6
8	8	10,3	10,3	10	10,3	10,6	13	13	13
200	200	258	258	250	258	265	325	325	325
90 - 93	90 - 93	93 - 95	93 - 95	89 - 89	93 - 95	91 - 93	92 - 94	92 - 94	92 - 94
1,9 - 0,88	1,9 - 0,88	2,3 - 1,1	2,3 - 1,1	2,4 - 1,2	2,3 - 1,1	2,3 - 1	3 - 1,4	3 - 1,4	3 - 1,4
8,4 - 18	8,4 - 18	9,6 - 20	9,6 - 20	6 - 14	9,6 - 20	6,4 - 12,3	7,5 - 16	7,5 - 16	7,5 - 16
16	16	22	22	15	22	16	22	22	22
-	-	√	-	-	-	√	-	√	√
60 - 300	60 - 300	70 - 300	70 - 300	70 - 300	70 - 300	150 - 300	70 - 300	70 - 300	70 - 300
OPTIONAL 5 m. x 1 (80)	OPTIONAL 5 m. x 1 (80)	OPTIONAL 5 m. x 1 (80)	OPTIONAL 5 m. x 1 (80)	-	OPTIONAL 5 m. x 1 (80)	5 m. x 1 (80)	OPTIONAL 9 m. x 1 o 2 (80)	OPTIONAL 9 m. x 1 o 2 (80)	OPTIONAL 9 m. x 1 o 2 (80)
80	80	80	80	80	80	80	80	80	80
50	50	50	50	50	50	50	50	50	50
1x270 m³/h	1x270 m³/h	1x430 m³/h	1x430 m³/h	1x430 m³/h	1x430 m³/h	1x430 m³/h 1x130 m³/h	1x430 m³/h	1x430 m³/h	1x430 m³/h
97	89	136	122	159	127	160	121	142	135
718 970 508	451 1008 477	615 1140 569	575 1151 582	693 1361 515	823 1095 587	548 1047 579	504 1110 514	555 1171 543	550 1119 525
-	-	-	-	487 270 388	-	-	-	-	-
Cast iron	Cast iron	Cast iron	Cast iron	Cast iron	Cast iron	Cast iron	Cast iron	Cast iron	Cast iron
Steel	Steel	Steel	Steel	Steel	Steel	Steel and Cast iron	Steel	Steel	Steel
Vermiculite Opc. Cast iron	Vermiculite Opc. Cast iron	Vermiculite Opc. Cast iron	Vermiculite Opc. Cast iron	Vermiculite	Vermiculite Opc. Cast iron	Vermiculite	Vermiculite	Cast iron	Cast iron
S1: Security thermostat and pressure switch	S1: Security thermostat and pressure switch	S1: Security thermostat and pressure switch	S1: Security thermostat and pressure switch	S1: Security thermostat and pressure switch	S1: Security thermostat and pressure switch	S1: Security thermostat and pressure switch	S1: Security thermostat and pressure switch	S1: Security thermostat and pressure switch	S1: Security thermostat and pressure switch
Stainless steel "T"	Stainless steel "T"	Stainless steel "T"	Stainless steel "T"	Stainless steel "T"	Stainless steel "T"	-	Stainless steel "T"	Stainless steel "T"	Stainless steel "T"
Auto Smart Night Energy	Auto Smart Night Energy	Auto Manual Soft	Auto Night	-	Auto Night	-	-	-	-
Oasys Plus	Oasys Plus	Oasys Plus	Oasys Plus	Oasys Plus	Oasys Plus	Oasys Plus	Oasys Plus	Oasys Plus	Oasys Plus
-	-	√	-	-	-	√	√	√	√
√	√	√	√	√	√	√	√	√	√
√	√	√	√	√	√	√	√	√	√
√	√	√	√	√	√	√	√	√	√
OPTIONAL KitWifi1	OPTIONAL KitWifi1	Included	OPTIONAL KitWifi1	OPTIONAL KitWifi2	OPTIONAL KitWifi1	OPTIONAL KitWifi1	OPTIONAL KitWifi1	OPTIONAL KitWifi1	OPTIONAL KitWifi1
√	√	√	√	√	√	√	√	√	√
√	√	√	√	√	√	√	-	-	-
-	-	-	-	-	-	√	-	-	-
-	-	-	-	-	-	-	-	-	-
Pag.: 48	Pag.: 50	Pag.: 62	Pag.: 64	Pag.: 66	Pag.: 68	Pag.: 70	Pag.: 72	Pag.: 74	Pag.: 76



Technical features

AIR SERIES



TECHNICAL DATA	CIRA	LUPE	ADRY	CLEO	DORA
kW Max.-Min.	8,5 - 4	8,5 - 4	11 - 5	11 - 5	11 - 5
kW Nom.	8	8	10	10	10
m³	200	200	250	250	250
Performance %	92 - 93	92 - 93	91 - 92	91 - 92	91 - 92
Consumption kg/h	1,8 - 1,1	1,8 - 1,1	2,3 - 1,2	2,3 - 1,2	2,3 - 1,2
Autonomy h	9,4 - 15,4	7,2 - 11,8	7,4 - 14,2	7,4 - 14,2	7,4 - 14,2
Hopper capacity kg	17	13	17	18	17
Airtight hopper	√	√	√	√	√
Electrical power W	70 - 300	70 - 300	65 - 300	65 - 300	63 - 300
Channelling Meters x n° outputs (Ø mm)	OPTIONAL 5 m. x 1 (80)	-	OPTIONAL 9 m. x 1 o 2 (80)	OPTIONAL 9 m. x 1 o 2 (80)	OPTIONAL 9 m. x 1 o 2 (80)
Channelling option	Upper or rear	-	Upper or rear	Upper or rear	Upper or rear
Smoke outlet Ø mm	80	80	80	80	80
Smoke outlet option	Upper, left side or rear	Upper, left side or rear	Upper, left side or rear	Upper, right side or rear	Upper, left side or rear
Air suction Ø mm	50	50	50	50	50
kg	1x270 m³/h	1x270 m³/h	1x380 m³/h	1x380 m³/h	1x380 m³/h
kg	108	107	Adry: 120 Adry-P: 140	144	119
General measures Width x Height x Depth	919 1132 268	940 953 270	918 1133 307	1005 1090 256	956 1122 268
Burner	Cast iron	Cast iron	Cast iron	Cast iron	Cast iron
Outer material	Steel	Steel	Steel	Steel and glass	Steel

Combustion chamber material	Vermiculite	Vermiculite	Vermiculite	Steel	Vermiculite
Safety systems	S1: Security thermostat and pressure switch	S1: Security thermostat and pressure switch	S1: Security thermostat and pressure switch	S1: Security thermostat and pressure switch	S1: Security thermostat and pressure switch
Included accessories	Remote control and stainless steel "T"	Remote control and stainless steel "T"	Remote control and stainless steel "T"	Remote control and stainless steel "T"	Remote control and stainless steel "T"

SYSTEMS					
Oasys / Oasys Plus System	Oasys Plus	Oasys Plus	Oasys Plus	Oasys Plus	Oasys Plus
FastOn System	-	-	√	-	-
Clean Glass System	√	√	√	√	√
Double Chamber System	√	√	√	√	√
Modulation System	√	√	√	√	√
Wifi	OPTIONAL KitWifi1	OPTIONAL KitWifi1	OPTIONAL KitWifi1	OPTIONAL KitWifi1	OPTIONAL KitWifi1
Programmable	√	√	√	√	√
Silent: Turbine disconnection	-	-	-	-	-
+ Info	Pag.: 52	Pag.: 54	Pag.: 56	Pag.: 58	Pag.: 60
Energy efficiency					

Certifications					
----------------	--	--	--	--	--

Technical features

HYDROSERIES



TECHNICAL DATA	ALPES-HYDRO	NOA-HYDRO	CLARA-HYDRO	CARLOTA	HYDROBOX	HYDROTEX-27	HYDROCONFORT-27
kW Max.-Min.	14 - 5	17 - 7,2	15 - 6	23 - 7,2	17 - 7,2	27 - 7	27 - 7
kW Nom.	12,8	15,8	14	20,2	15,8	26	26
kW Max. Min to the air	1,6 - 0,9	1,5 - 2	2 - 0,2				
kW Max. Min.to the water	11,2 - 4,1	14,3 - 5,2	12 - 5,8	18 - 6,8	14,3 - 5,2	26 - 7	26 - 7
m³	320	395	350	507	395	650	650
Performance %	92 - 96	93 - 96	93 - 96	91 - 96	93 - 96	84 - 91	84 - 91
Consumption kg/h	3 - 1,1	3,9 - 1,5	3,2 - 1,5	4,9 - 1,5	3,9 - 1,5	6,4 - 1,6	6,4 - 1,6
Autonomy h	11,3 - 31	4,8 - 12,6	8 - 16,6	9,8 - 32	7,7 - 20	8,9 - 40	8,9 - 40
Hopper capacity kg	34	19	25	48	30	60	60
Airtight hopper	-	-	-	√	√	√	√
Electrical power W	70 - 300	70 - 300	150 - 300	150 - 500	150 - 400	150 - 450	150 - 450
Radiators *	80	100	85	129	100	186	186
Under floor heating *	112	140	120	180	140	260	260
Smoke outlet Ø mm	80	80	80	100	80	100	100
Air suction Ø mm	50	50	50	60	50	60	60
Service max temperature	40 / 80	40 / 80	40 / 80	40 / 80	40 / 80	40 / 80	40 / 80
Closed expansion vessel (L)	6	6	6	6	6	6	6
Work pressure (bar)	1,5	1,5	1,5	1,5	1,5	1,5	1,5
Service max temperature (bar)	2,4	2,4	2,4	2,4	2,4	3	3

kg	144	128	169	198	180	275	280
General measures Width x Height x Depth	808 713 608	572 1109 597	1013 934 287	607 1277 695	611 880 625	725 1380 844	725 1380 987
Burner	Cast iron	Cast iron	Cast iron	Cast iron	Cast iron	Cast iron	Cast iron
Outer material	Steel	Steel	Steel	Steel	Steel	Steel	Steel
Combustion chamber material	Steel	Steel	Steel	Steel	Steel	Steel	Steel
Safety systems	S2: Security thermostat, water security thermostat, Pressure switch, 3 bar valve and pressure transducer	S2: Security thermostat, water security thermostat, Pressure switch, 3 bar valve and pressure transducer	S2: Security thermostat, water security thermostat, Pressure switch, 3 bar valve and pressure transducer	S2: Security thermostat, water security thermostat, Pressure switch, 3 bar valve and pressure transducer	S2: Security thermostat, water security thermostat, Pressure switch, 3 bar valve and pressure transducer	S2: Security thermostat, water security thermostat, Pressure switch, 3 bar valve and pressure transducer	S2: Security thermostat, water security thermostat, Pressure switch, 3 bar valve and pressure transducer

Included accessories	Remote control.	-	Remote control.	-	-	-	-
SYSTEMS							
Oasys / Oasys Plus System	Oasys Plus	Oasys Plus	Oasys Plus	Oasys	Oasys Plus	Oasys Plus	Oasys Plus
FastOn System	-	-	-	-	-	-	-
Clean Glass System	√	√	√	√	√	-	-
Double Chamber System	√	√	√	√	√	√	√
Pellet load level sensor	√	-	-	-	√	√	√
Modulation System	√	√	√	√	√	√	√
Wifi	OPTIONAL KitWifi1	OPTIONAL KitWifi1	OPTIONAL KitWifi1	-	OPTIONAL KitWifi2	OPTIONAL KitWifi2	OPTIONAL KitWifi2
Programmable	√	√	√	√	√	√	√
Silent: Turbine disconnection	-	-	-	-	-	-	-
+ Info	Pag.: 80	Pag.: 82	Pag.: 84	Pag.: 86	Pag.: 88	Pag.: 90	Pag.: 90
Energy efficiency							

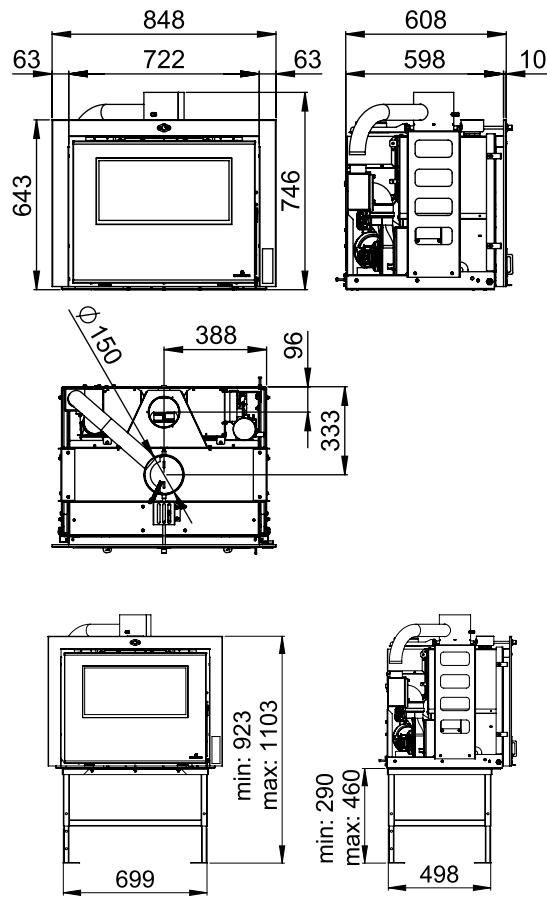
Certifications						UNE-EN-303/5	UNE-EN-303/5
----------------	--	--	--	--	--	--------------	--------------



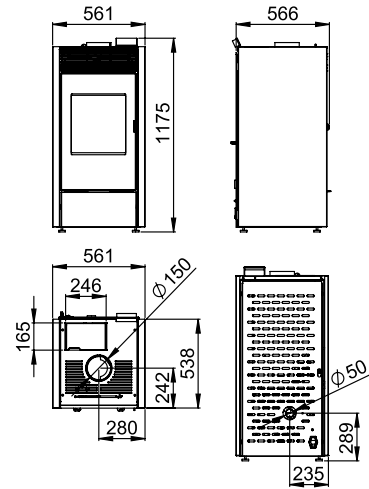
DRAWINGS

Drawings

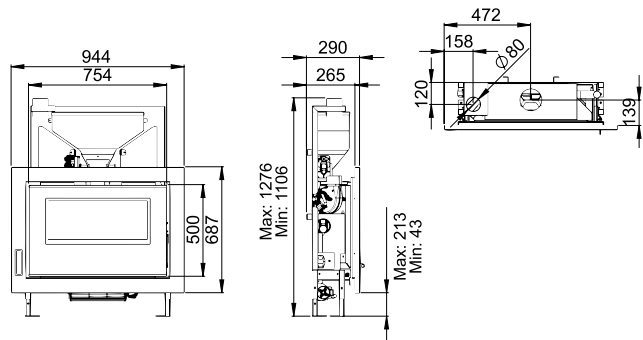
INSERT-HYBRID



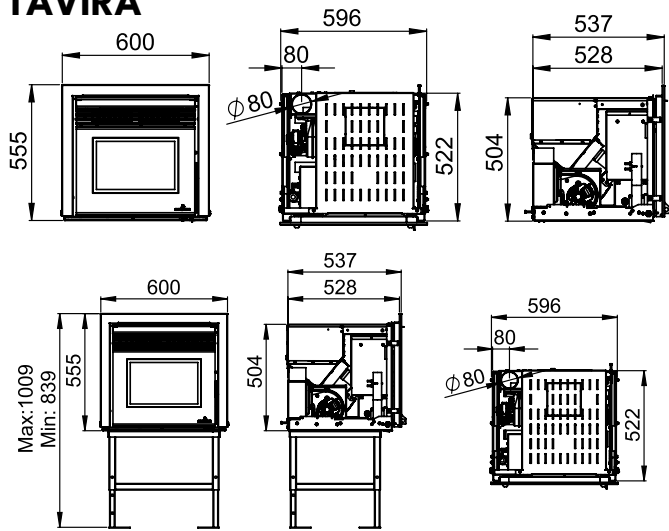
HYBRID



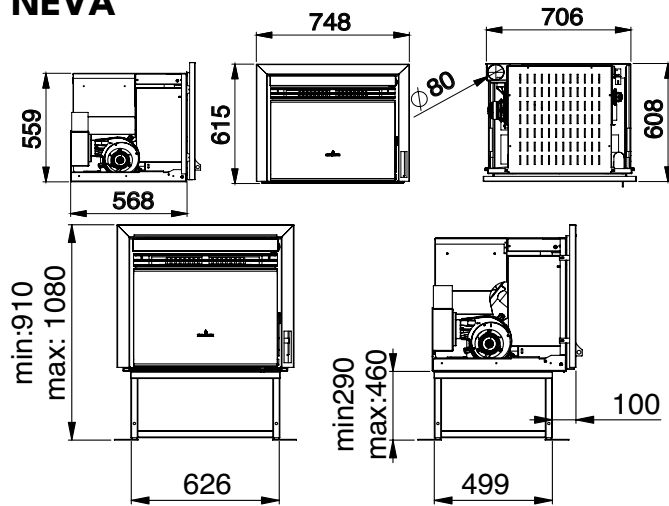
BRUNO-SLIM



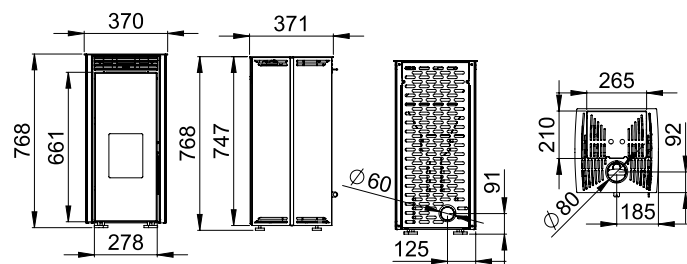
TAVIRA



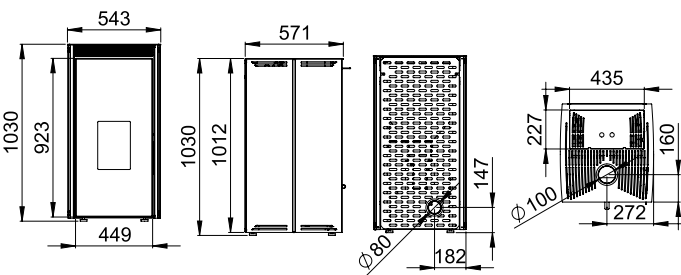
NEVA



FREE-6

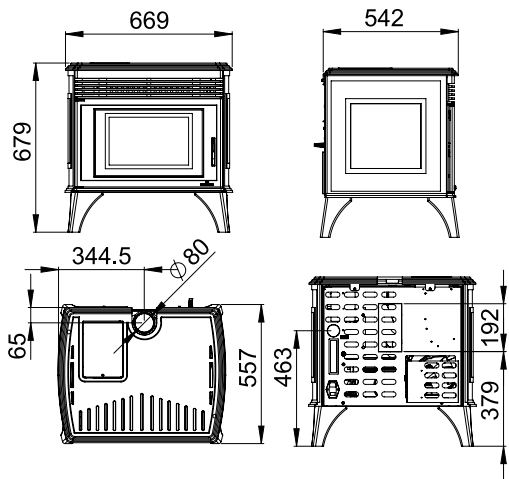


FREE-11

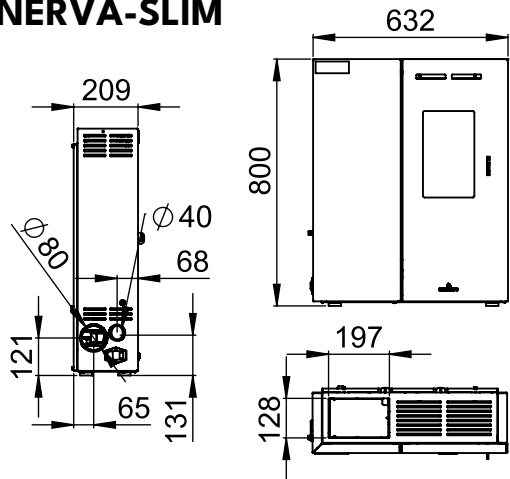


Drawings

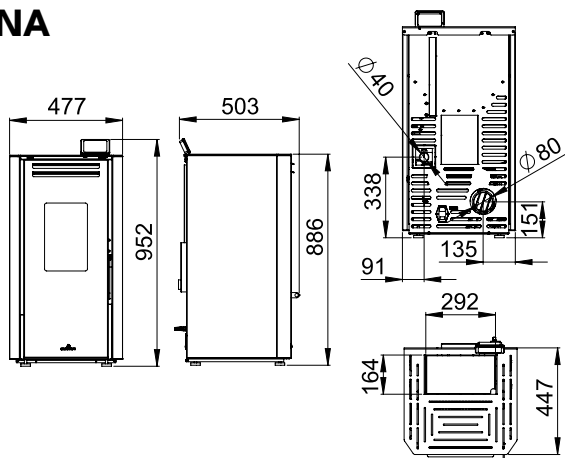
NICOL



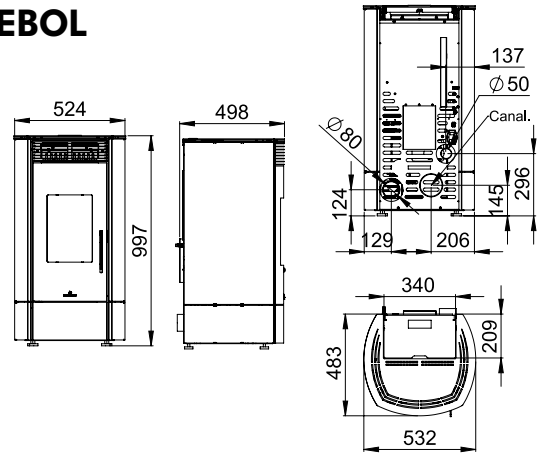
MINERVA-SLIM



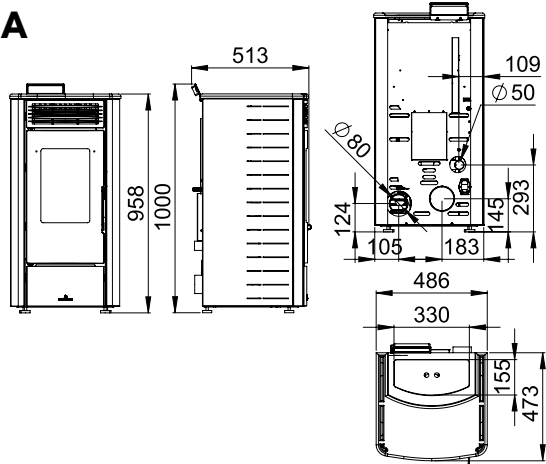
TINA



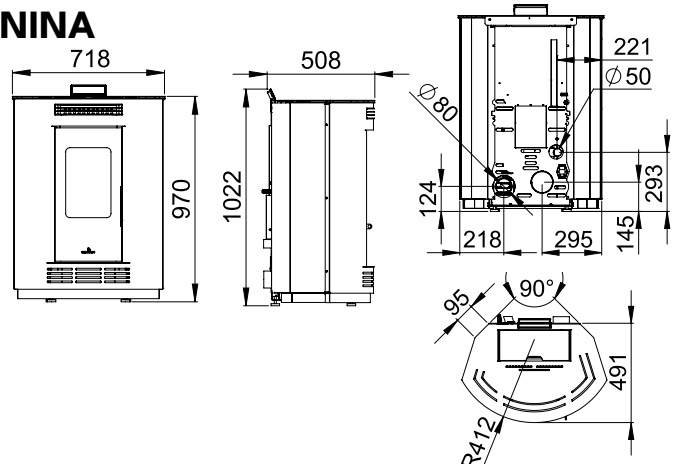
TREBOL



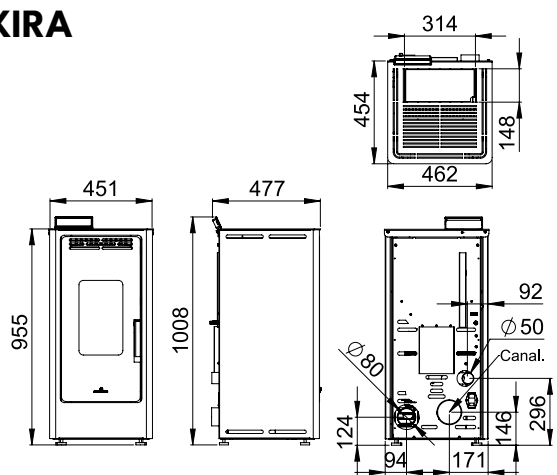
RITA



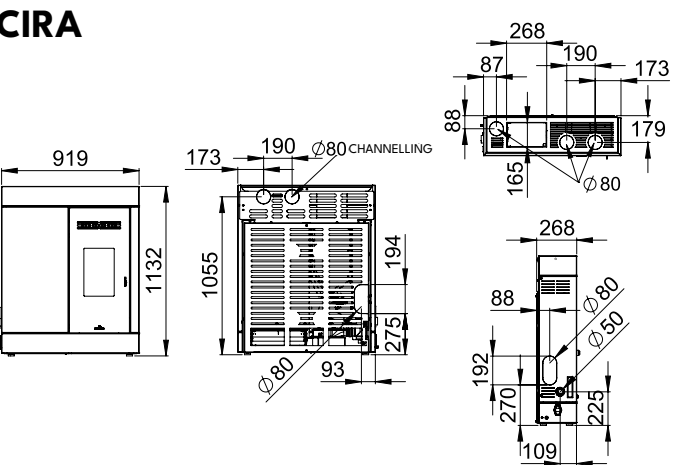
NINA



KIRA

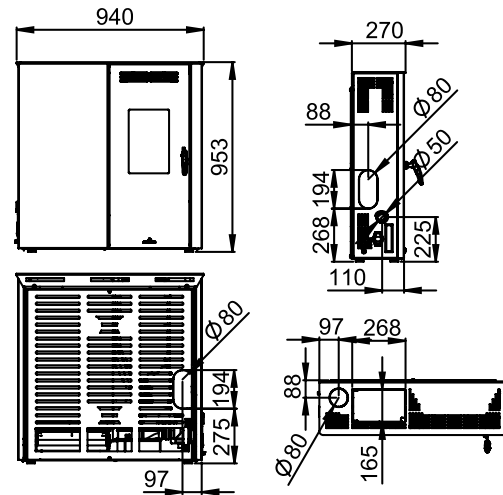


CIRA

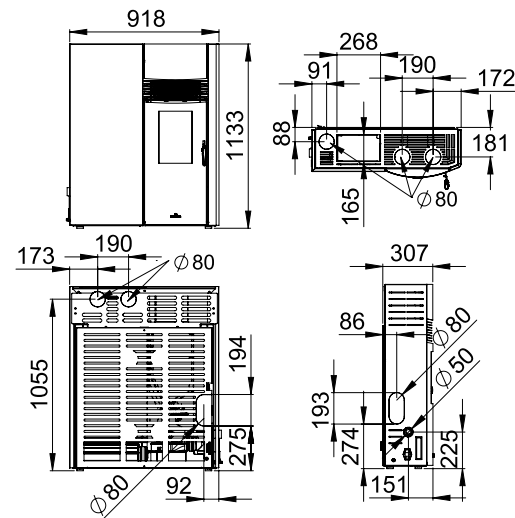


Drawings

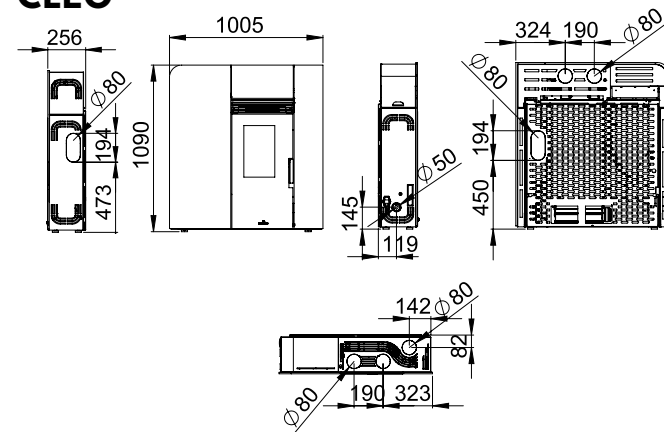
LUPE



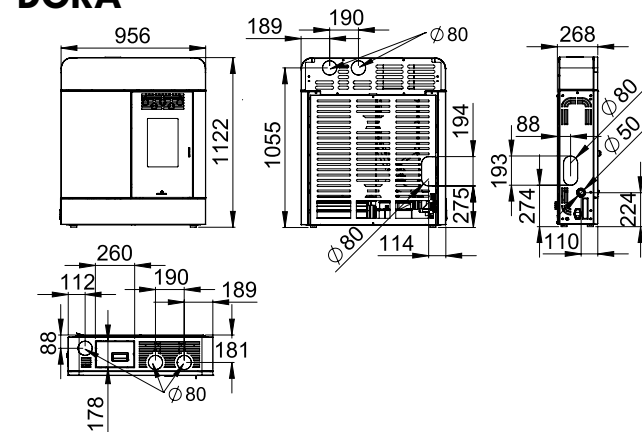
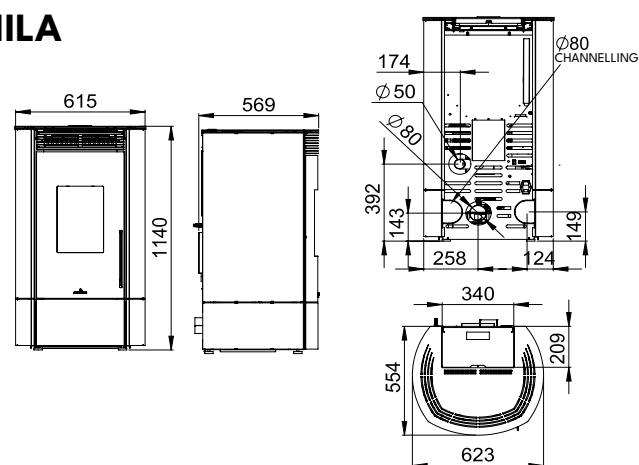
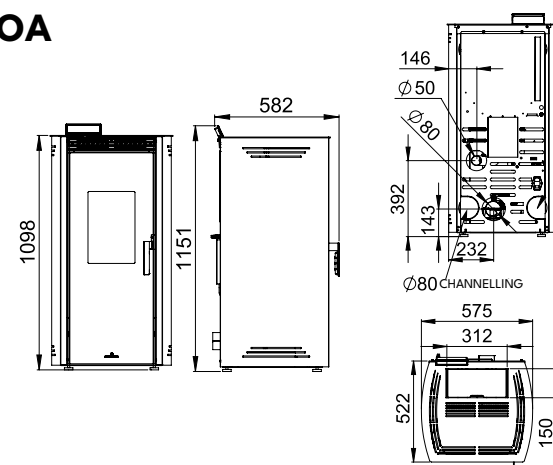
ADRY



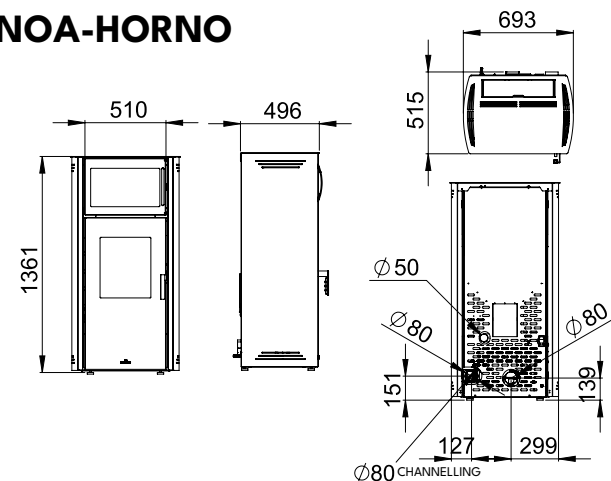
CLEO



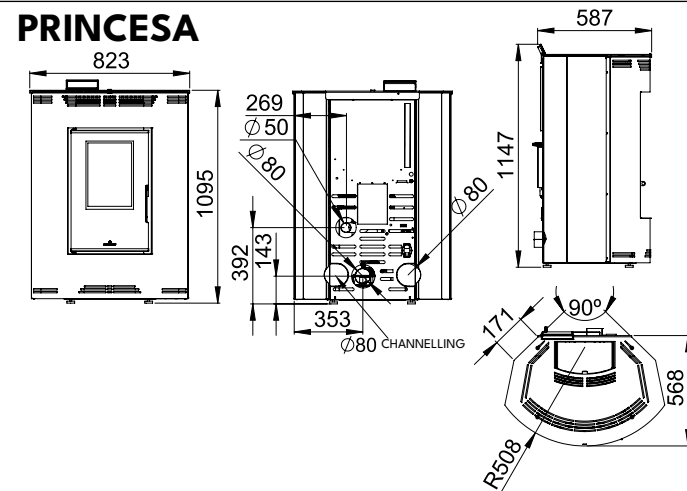
DORA

**MILA****NOA**

NOA-HORNO

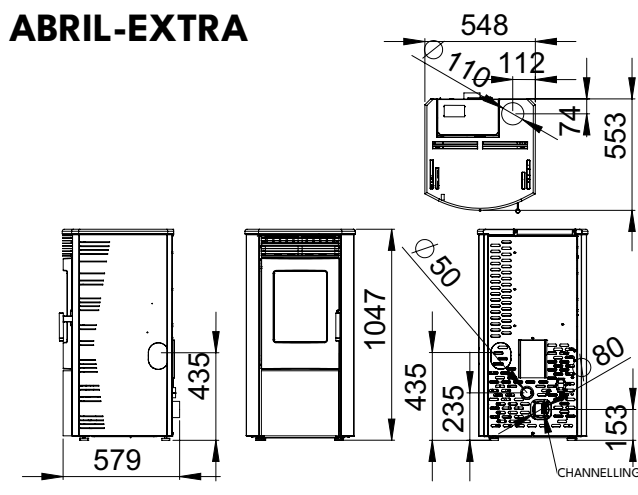


PRINCESA

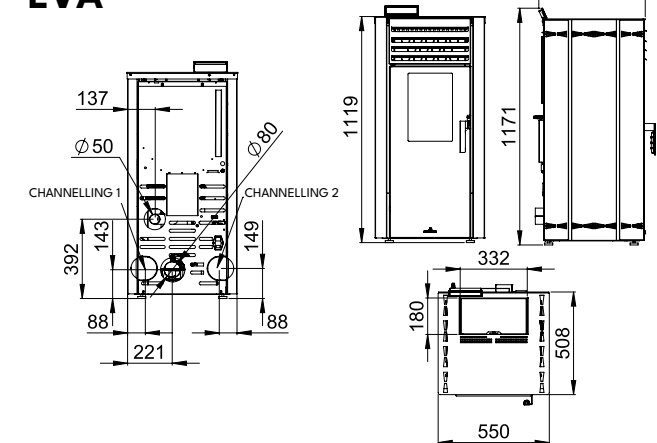


Drawings

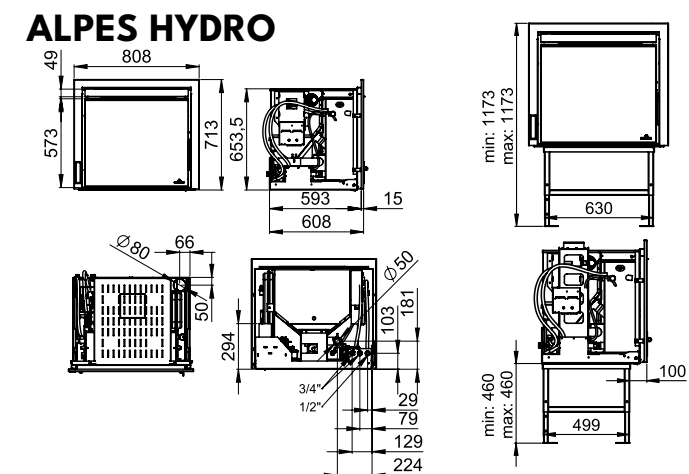
ABRIL-EXTRA



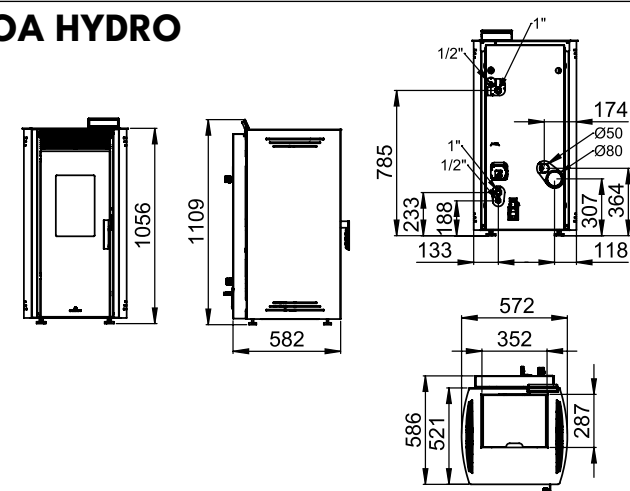
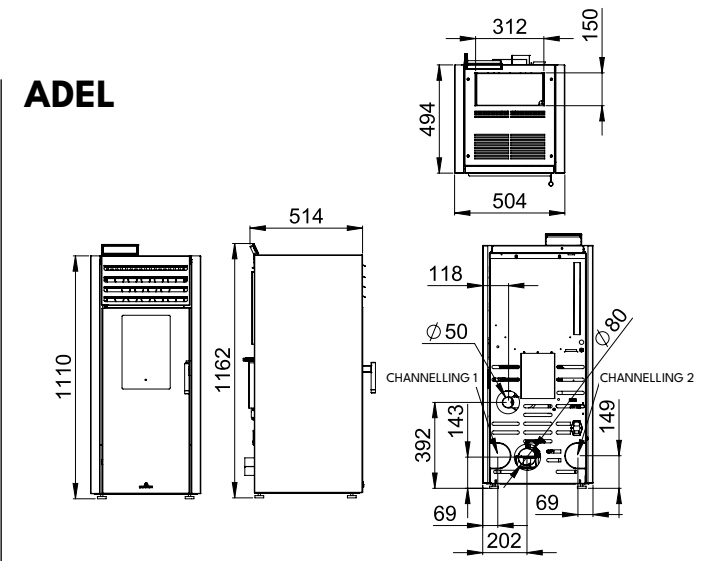
EVA



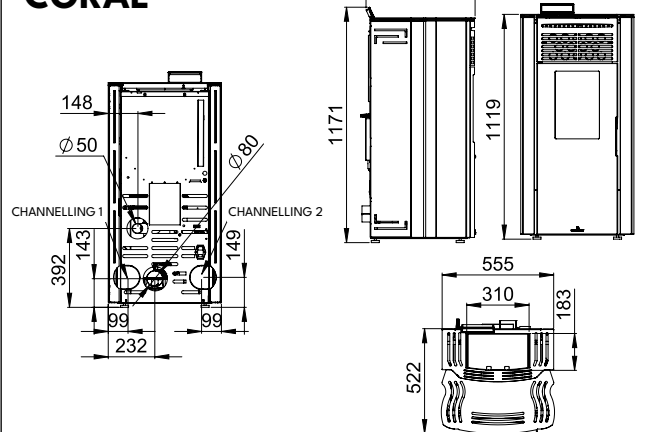
ALPES HYDRO



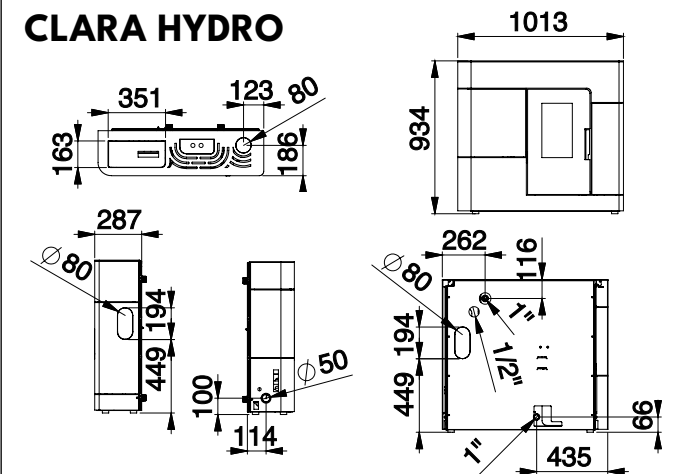
NOA HYDRO

**ADEL**

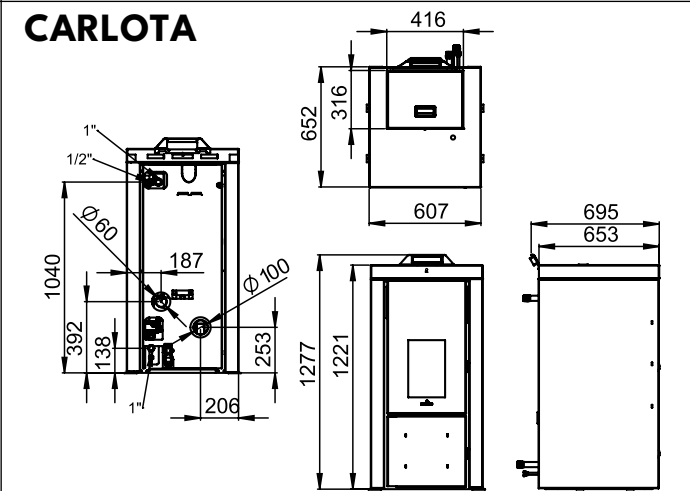
CORAL



CLARA HYDRO

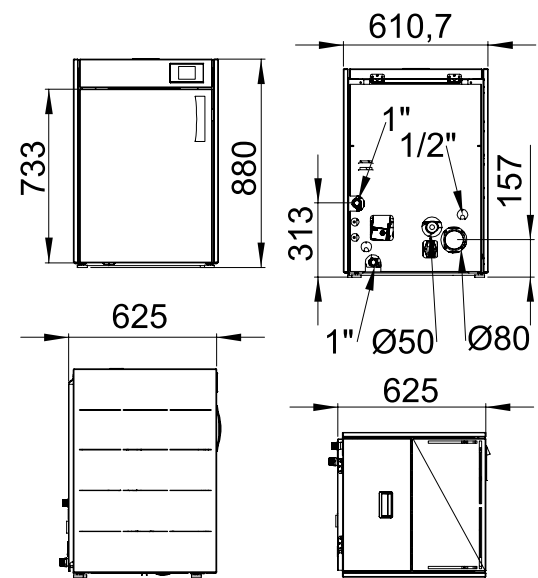


CARLOTA

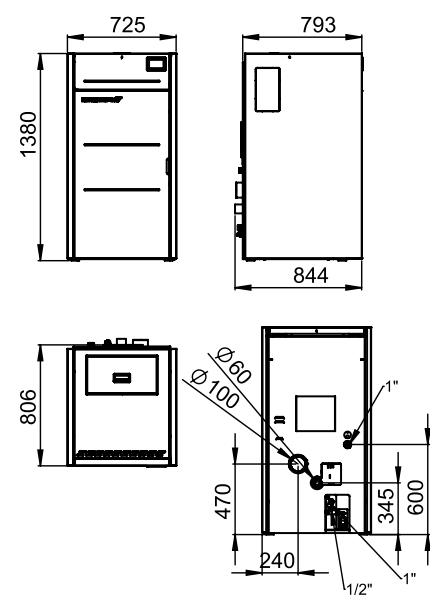


Drawings

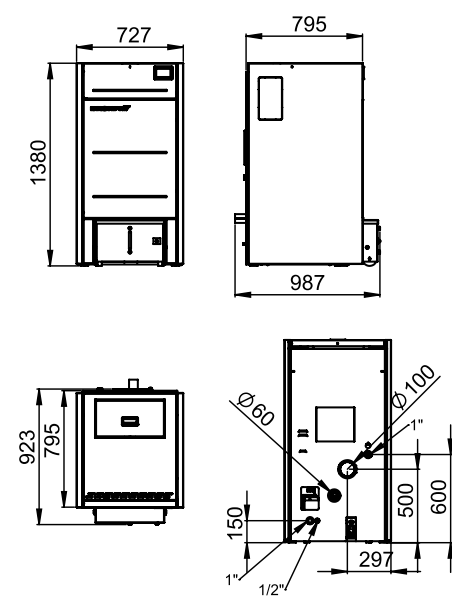
HYDROBOX



HYDROTEX-27



HYDROCONFORT-27



All technical information provided in this catalogue is only indicative and cannot be considered as definitive. The company reserves the right to make changes at any time, without prior notice. The colors provided are purely indicative.

The contents of this catalogue may not be reproduced in whole or in part without the permission of Bronpi.





Ctra. Córdoba-Málaga, km 78,2 Nacional 331, Salida Autovía 62 Lucena Sur
Telf. +34 957 50 27 50
Apartado de Correos 255
14900 Lucena (Córdoba) SPAIN
e-mail: bronpi@bronpi.com
www.bronpi.com

