

# PARIS 70V G



SDC



SCL



78



3



275



171



150



2x120



1x290



580x290x287



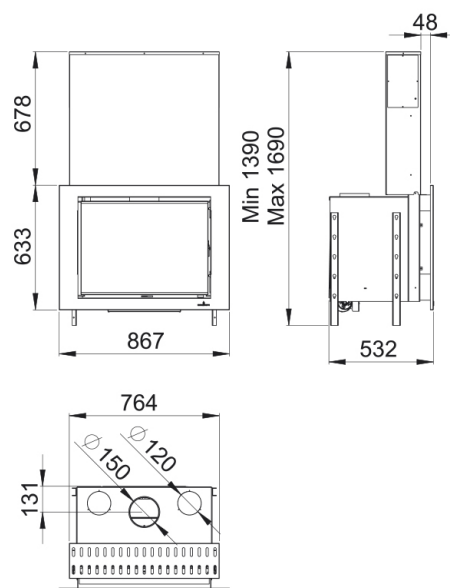
60



11

## Features

- Double Combustion System
- Clean Glass System
- Heating power: 11kw
- Efficiency (%): 78%
- Consumption (kg/h): 3kg/h
- Heating capacity (m3): 275m3
- Cast-iron interior
- Manufactured in cast-iron and sheet
- Weight (kg): 171kg
- Smoke exit tube diameter (mm): 150mm
- Air channel (diameter and exit tube number): 2x120
- Forced ventilation: 1x290
- Useful chamber measures: 580x290x287mm
- Maximum logs size (cm): 60cm



Given the continued improvement of our products and improving our manufacturing process, size, aesthetics and product specifications are subject to change without prior notice from our company.

[www.bronpi.com](http://www.bronpi.com)



la excelencia en el fuego