

MURANO-E



BRONPI
la excelencia en el fuego

OPCIONAL KIT-INOX-2: KIT CON REVESTIMIENTO INTERIOR PARA EL HORNO EN ACERO INOXIDABLE.
OPTIONAL KIT-INOX-2: KIT FOR STAINLESS STEEL OVEN INTERIOR.
KIT-INOX-2 OPCIONAL: KIT PARA HORNO, COM REVESTIMIENTO INTERIOR.
OPZIONALE KIT-INOX-2: KIT CON RIVESTIMENTO INTERNO PER IL FORNO IN ACCIAIO INOX.
OPTIONNEL KIT-INOX-2: KIT AVEC REVÊTEMENT INTÉRIEUR POUR LE FOUR EN ACIER INOXYDABLE.



BRONPI
la excelencia en el fuego



SDC



SCL



SEH



14



85



3,9



350



610x301x417



176



200



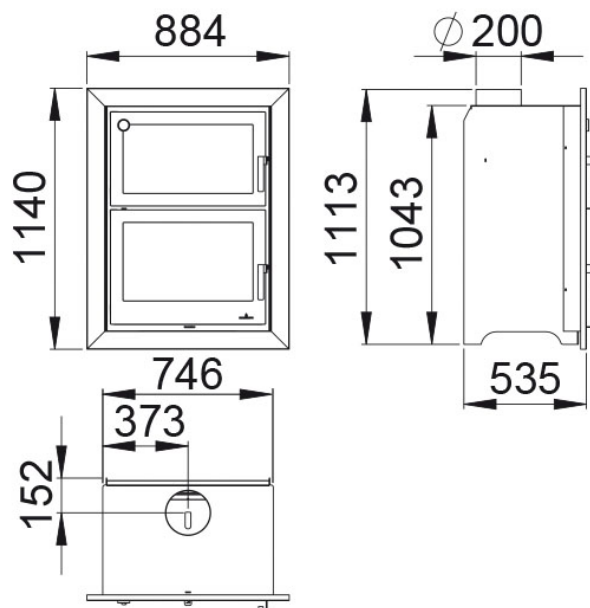
610x333x404



62

Features

- Double Combustion System
- Clean Glass System
- Surround System Oven
- Heating power: 14kw
- Efficiency (%): 85%
- Consumption (kg/h): 3,9kg/h
- Heating capacity (m3): 350m3
- Vermiculite inside
- Manufactured in cast-iron and sheet
- Weight (kg): 176kg
- Smoke exit tube diameter (mm): 200mm
- Useful chamber measures: 610x301x417mm
- Useful chamber measures: 610x333x404mm
- Maximum logs size (cm): 62cm



Given the continued improvement of our products and improving our manufacturing process, size, aesthetics and product specifications are subject to change without prior notice from our company.

www.bronpi.com

BRONPI
la excelencia en el fuego